

Why should I use a Construction Manager? *(when I already have a staff of Engineers)*

Article by Tim Bramsen, CCM

Throughout my involvement with CMAA Hawaii, I have had the opportunity to speak with some of Hawaii's owners regarding the benefit of utilizing Construction Managers (or Certified Construction Managers- CCMs) on their projects. At one of the first such meetings, I was asked, "Why should I use a Construction Manager on my projects when I already have a staff of engineers"? Although it seemed intuitively like such an obvious and valid question, I fumbled a bit on my answer that day, and since then I have spent a lot of time pondering the "right" answer to this question.

I would like to preface my statements by saying that there are many Engineers overseeing construction field operations who work hard and do a fine job, it is not my intent to demean their work in any way. The best CCMs I have ever worked with also had their PE's.

In its most simple form, a construction project can be broken down into 2 phases. The planning of the work and the execution of the work.

The planning of the work is chiefly the realm of the Engineer (or Architect). Without proper planning, there is no order, no specifications, no scope, no contract. While using a Construction Manager's skillset in the pre-design and design phases is important to the planning of the project- and will certainly help eliminate impacts of the constructability issues that may otherwise be overlooked, the majority of the planning, calculations, and development of the contract documents is done by the Engineer.

The execution of the contract in the field,

ensuring the project is built as well as possible, that construction of the project runs as smoothly as possible, and concludes with the fewest delays or claims possible is the role of the Construction Manager. The Construction Manager in the field is the liaison between the Owner, Engineer (Architect), and the Contractor. He/She is the keeper of the compass (scope) and the stopwatch (schedule) as the facility is constructed.

While formal education is an important aspect of being a CM, the most valuable skills that the CM brings to the table are communication skills and field experience.

Communication is one key. Although plansets and specifications seem somewhat bulletproof at the time the project is advertised, once construction starts, you will find that another reasonable interpretation exists- that of the contractor building the project. Black and white often become gray. Understanding these gray areas and navigating them to a conclusion that benefits the owner, while keeping the contractor whole- is what we as CMs do. One key to building the best project possible is to develop the common ground between the Owner and the Contractor. That is not to say that you take your eye off the contract require-

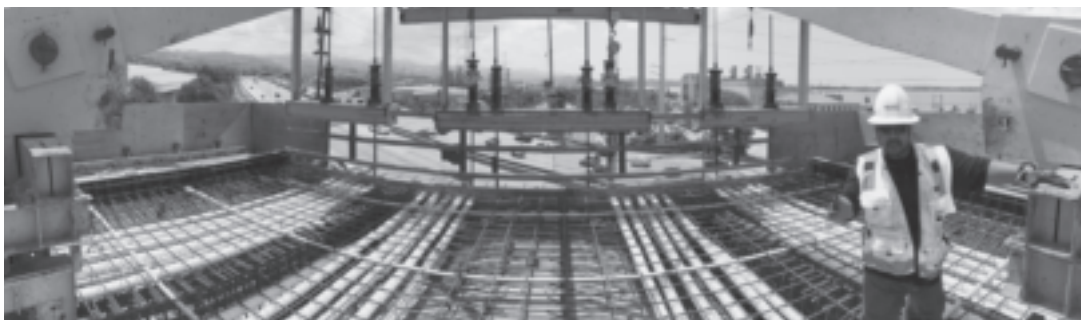


Constructing the rail guideway.

ments, it is actually the opposite of this. It means that you work with the contractor to ensure that, as they start the work, they have the same picture in their head of the finished product as the owner does. Then you manage that process and help them build it correctly the first time; as efficiently as possible. Doing this harnesses the synergy of the larger team and allows both sides to focus cooperatively against the issues that are inherent in the construction of any project. I have been on large and small projects where this has worked.

Field experience is the other key. The ability to look ahead and find/eliminate issues before they arise in the field is not something that you can learn through formal training. It results from years of experience obtained resolving similar situations and issues and either knowing how to avoid them ahead of time or how to effectively

handle them when they do happen. This experience is also very effective when negotiating changes to the contract, "arguing" plan and specification interpretations with the contractor, effectively discussing and explaining to non-field personnel issues encountered onsite, finding the "wiggle room" between (what may at times seem like) 2 immovable circumstances that will allow for-



CM Harris Okazaki on the Kamehameha Highway guideway.



Published monthly by:

HAWAII COUNCIL OF ENGINEERING SOCIETIES

SERVICE PRINTERS, INC.

1829 Dillingham Boulevard • Honolulu, HI 96819

Telephone: (808) 841-7644 • Fax: (808) 847-1487

ADDRESS ARTICLES FOR PUBLICATION TO:

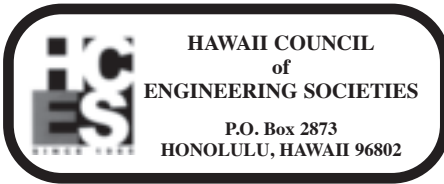
WARREN YAMAMOTO

1526-C Pukey Avenue • Honolulu, HI 96816

Telephone: 732-5216

WILIKI MAILING LIST

Additions and/or corrections to the Wiliki mailing list should indicate the proper society, institution or association. Corrections to email addresses should be submitted to your society coordinator.



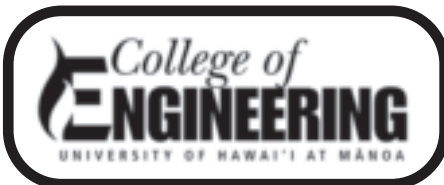
HOME PAGE: hceshawaii.org

EMAIL: hcesorg@gmail.com

2016-2017 OFFICERS

Chair: Joanne Hiramatsu
 Vice-Chair: Kristen Yoshida
 Secretary:
 Treasurer: Ken Kawahara

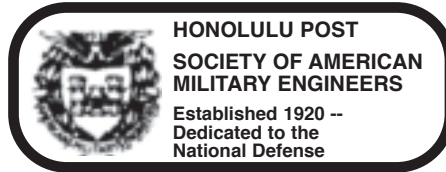
SOC	Representative	Alternate
AACE	C. Kanae	M. Ueyehara
ACECH	K. Kawahara	
APWA	J. Hiramatsu	
ASCE	B. Rasa	
ASHRAE	D. Kiahi	
ASME	D. Kam	D. Sato
CMAA	T. Bramson	
EAH	M. Albright	
FALEA	F.T. Cruzata	
HSPE	M. Kamaka	K. Kunimine
IEEE	G. Torigoe	
ITE	W. Yamamoto	
SAME	L. Wong	
SEAOH	R. Lawton	
SFPE	S. Dannaway	
SWE	K. Yoshida	
UHM CoE	S.K. Choi	



2540 Dole Street, Holmes Hall
 Honolulu, Hawaii 96822

UHM College of Engineering Deans and Chairs

Interim Dean H. Ronald Riggs
 Assistant Dean Song K. Choi
 CEE Chair Panos Prevedouros
 EE Chair Wayne Shiroma
 ME Chair Mehrdad N. Ghasemi Nejjad
 HCAC Director Magdy Iskander



P.O. Box 31218, Honolulu, HI 96817
 Web page: www.samehonolulu.org

SAME Honolulu Officers and Directors

President Col Scott Warner, USAF
 VP/Programs Bryan Zachmeier, USAF (Ret)
 VP/Sustaining Members Will Boudra, F.SAME, USN (Ret)
 Secretary Wesley Ishizu
 Treasurer Capt Jonathan Polston, USAF
 Regional VP, Pacific Region David Brotchie, PE
 Advisor at Lge, Air Force Richard Stump, AIA, F.SAME
 Advisor at Lge, Army Col Mickey Addison, USAF
 Advisor at Lge, Civilian MAJ Andrew Johannes, USA
 Advisor at Lge, Coast Guard John Lohr, Col, USAF (Ret)
 Advisor at Lge, Navy LCDR Todd Wimmer, USCG
 LCDR Nathaniel Herron, USN

2017 SAME Honolulu Scholarship Program

Each year, SAME Honolulu offers several four-year and one-year scholarships to deserving high school seniors and college students who will be or are currently enrolled at a university with an accredited engineering or architecture program. For more information on the 2017 scholarship program categories, eligibility, and scholarship application submittal requirements, download the 2017 SAME Honolulu Scholarship Application at www.samehonolulu.org. **Application deadline is May 31, 2017(postmarked).**

Winners will be announced in late June / early July 2017. For inquiries, contact the Communications and Scholarship Director, Julie Chen at Scholarship@samehonolulu.org.

2017 SAME Honolulu Pacific Industry Forum and Scholarship May 9-10, 2017 | Ala Moana Hotel and Kaneohe Klipper Golf Course

The 2017 SAME Honolulu Post Pacific Industry Forum will once again be paired with a Scholarship Program Golf Tournament. The Pacific Industry Forum will be held on May 9 at the Ala Moana Hotel with the golf tournament held on the following day (May 10) at the scenic Kaneohe Klipper Golf Course on Marine Corps Base Hawaii (MCBH).

The forum and golf tournament proceeds will support SAME Honolulu Post's scholarship program, construction camps, and youth outreach programs for Hawaii students pursuing their education in engineering or architecture. Please save the date and encourage your co-workers, colleagues, and friends to come out and support the future engineers and architects of this country.

The 2017 Pacific Industry Forum will bring SAME sustaining and individual members, non-members, and senior leaders from the Federal, State and County Governments for program briefings, a luncheon, and small business networking opportunities.

The 2017 Scholarship Program Golf Tournament offers excellent networking opportunities while providing friendly competition among firms and Department of Defense/military members.

To register, visit SAME Honolulu website at www.samehonolulu.org.

For more information about the Pacific Industry Forum, email samehonolulu@gmail.com.

For more information about the Scholarship Program Golf Tournament, email matthew.stimpson@aecom.com.

SAME Honolulu April 12, 2017 Lunch Meeting Presentation

Topic: Flood Mitigation for Fort Shafter Flats, Planning, Design, and Construction

Synopsis: This presentation discussed the flood plain mapping revisions, planning for flood mitigation, and the design and construction of the flood mitigation project at Fort Shafter Flats. This project was undertaken to remove the upper Fort Shafter Flats from the 1% annual chance exceedance floodplain to protect military personal and property.

Presenter: Michael Wong, Chief of Civil Works Technical Branch, Engineering and Construction Division, U.S. Army Corps of Engineers

Michael Wong has served as the Chief of Civil Works Technical Branch since 2010. Prior to this appointment, Michael was the Technical Branch's Hydrologic and Hydraulic (H&H) team leader. The Civil Works Technical Branch is engaged in a wide range of services in the fields of flood control, hydrologic and floodplain analysis, economics, environmental restoration, coastal erosion, commercial navigation, and operations and maintenance.

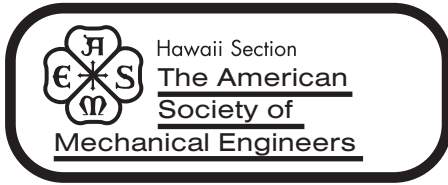
Michael obtained his B.S. in Civil Engineering in 1989 and M.S. in Civil Engineering in 1991 from the University of Hawaii at Manoa. He began working in the U.S. Army Corps of Engineers (USACE), Honolulu District in June 2004 as a Hydraulic Engineer. He has worked on many H&H projects covering flood risk reduction, flood hazard analysis, storm drainage analysis, levee performance, and dam break analysis. Project work has included design, project formulation, and project management.



Po Box 12204 Honolulu, HI 96828
www.uhalumni.org/eaauh

2016-2017 Officers

President Neal Miyake
 Vice Pres Anthony Paresa
 Treasurer Dennis Toba
 Secretary Rodney Chong
 Immediate Past Pres Keith Uemura
 Past Pres Dayna Nemoto
 Directors Stephen Cayetano
 Ken Hayashida
 John Katahira
 Ken Kawahara
 Diane Kodama
 Stancher Mabellos
 Mike Magaooay
 Derek Mukai
 Martin Nakasone
 Ross Okuda
 Landon Sakai
 Wayne Shiroma
 Jonathan Suzuki
 Edward Yoshimura
 Kyle Yukumoto
 Student Dir Michele Shimoda



www.asme-hi.com

ASME-HI 2015-2016 Officers

Chairperson	Derek Sato	543-4108
	<i>Derek.sato@hawaiianelectric.com</i>	
Vice-Chair	Derick Kam	
	<i>derickFPE@gmail.com</i>	
Secretary	Victor Russell	
	<i>dsaengr@aol.com</i>	
Treasurer	Kevin Dang	737-1708
	<i>dangk001@hawaii.rr.com</i>	
Past-Chair	Kory Ikeda	
HCES Rep:	Derick Kam	
Alternate:	Derek Sato	

NEXT ASME-HAWAII SECTION GENERAL MEMBERSHIP MEETING

Date: June 6, 2017

Time: 5:30 pm to 7:00 pm

Place: HECO Ward Ave Cafeteria Conference Room

Agenda: To be announced. This will be the last meeting as Chairman for Derek Sato.

As usual, all members are invited and encouraged to attend our meetings. There are always lots of complimentary pizza and soft drinks. Please contact Chairman Derek Sato for directions and for more information, such as parking within Hawaiian Electric's Ward Avenue facilities.

HIGHLIGHTS OF MARCH 28 GENERAL MEMBERSHIP MEETING

Meeting was held at Hawaiian Electric's Ward Avenue cafeteria on March 28, 2017, and called to order by Chairman Derek Sato. The reports and discussions included the following:

Student Section Report by Ryan Roque:

- Newly elected President Ryan Roque announced the newly elected officers and committee chairpersons. The officers are President Ryan Roque, Vice President Karen Calaro, Treasurer Mykal Guigui, and Secretary Michelle Reed.
- Industry Guest Speaker from Pearl Harbor Shipyard attracted 80+ students. Presentation included careers at Pearl Harbor and how to apply for jobs there.
- The Student Section welcomes industry professional speakers on topics such as career fields, interview preparation and skills, the preferred candidate experiences, expectations of a young engineer, and other career/job search enhancement information and tips.

UHM DME Report by Dr. Zac Trimble:

- The official Mechanical Engineering registration count for the spring 2017 semester is 400+ students.
- Interviews for the new Dean of the College of Engineering are underway. Three current candidates have mechanical engineering backgrounds.
- Three ME Students attended the ASME E-fest West March 17-19, 2017 at the University of Nevada Las Vegas campus. The Human Powered Vehicle Challenge (HPVC) was held in conjunction with the E-fest event. CSU Northridge took overall 1st place.
- DME Industry Advisory Board meeting is planned for May 6, 2017.

Francis Rhodes Montgomery Design Competition: The competition will be on Friday, May 5, 2017 from 12 noon to 6 PM, on the UHM campus. The ME-482 student teams' abstract for judges are due by April 28, 2017. Dr. Zac Trimble will provide the judges the student project and presentation objectives. All

four judges are from Hawaiian Electric Company and have an ME background. There are 11 teams competing for four monetary prizes. ASME Hawaii Section voted to donate \$1,000 to the UHM DME in appreciation for this design competition.

Program for the Evening: Speaker Alexius Emejorn of Hayward Gordon (Pumps and Mixers).

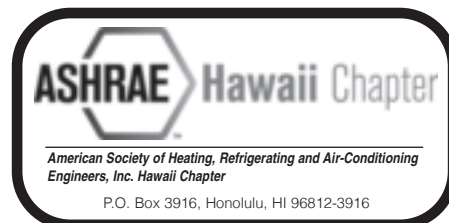
ASME-HAWAII P.E. REFRESHER COURSE

The 2017 Spring P.E. Refresher Course ended on April 19, 2017 with the Review and Questions session after 19 classes conducted by volunteers Dr. Charly Kinoshita, Dr. Stephen Masutani, Dr. Zac Trimble, and Raymond Liu, P.E. The Hawaii Section thanks these Mechanical Engineer instructors for their dedication and promotion of mechanical engineering. They donated many hours preparing for and conducting refreshers on Thermodynamics, Heat Transfer, Fluids, Machine Design, Mechanics, and HVAC.

For Raymond Liu, besides facilitating and instructing the HVAC, Engineering Economics, Electricity & Electrical Equipment chapters, he facilitated the mock exams, and organized and coordinated this entire P.E. Refresher Course. Thank you, Raymond Liu.

2017 ASME-HI BALLOT AND SURVEY

Our SurveyMonkey.com 2017 ballot and survey will end on April 30, 2017. Total respondents are holding at 24. Congratulations to are new officers, 2017-2018, who are Froilan Garma, Chairman; Derick Kam, Vice-Chair; Kevin Dang, Treasurer; Jason Frifeldt, Secretary; and Raymond Liu and Ronald Flegal, the Member (formerly Director) positions. There is a new position called the Group Page Administrator with Derek Sato, who will also be the Immediate Past-Chair. ASME Hawaii would like to thank Derek Sato for his many years of serving and keeping afloat the Hawaii Section. Although he is stepping down, we are very pleased that he plans to remain very active to help guide the new officers. Thank you, Derek Sato.



2016-2017 chapter officers and BOB

President:	Dean Borges P.E.
President Elect:	Kevin Luoma P.E.
Vice President:	Mofazzal Mir P.E.
Secretary:	Willie Diguc
Treasurer:	Samantha Niver P.E.



HAWAII CHAPTER OFFICERS

President: Robert Bigtas
S.S. Dannaway Associates
rbigtas@ssdafire.com
Vice President: Derick Kam
Fire Protection
Secretary: Ferdi Guinto
Lohaus and Associates
Treasurer: Sam Dannaway
Coffman Engineers



Website: hawaii.apwa.net

2017 Officers

President	Ryan Char	523-5866
	<i>ryanc@g70.design</i>	
Vice-Pres	Darin Izon	523-8499
	<i>dizon@BrwnCald.com</i>	
Secretary	Rouen Liu	543-7245
	<i>rouen.liu@hawaiianelectric.com</i>	
Past Pres	Victor Valdez	356-1281
	<i>vvaldez@ssfm.com</i>	

National Public Works Week

National Public Works Week is traditionally sponsored and observed during the third full week in May. During May 21-27, Hawaii Chapter will maintain an exhibit of various recent public works projects to energize and educate the public on the importance of the contribution of public works to their daily lives. The exhibit will also include proclamations from the Mayor and the Governor.

This year's theme "Public Works Connects Us" celebrates the vital role public works plays in connecting us all together. As the cornerstone of civilization, public works provides, maintains, and improves the structures and services that assure a higher quality of life for our communities. Its streets, roads, bridges, and public transportation keep us linked together from coast to coast, and its clean water and sanitation services keep us healthy and allow our communities to grow and prosper. APWA proudly salutes and thanks our public works professionals who work tirelessly every day to strengthen the bond that keeps us all connected. Additional information may be found at www.apwa.net.

Annual Education Fund Golf Tournament

The 24th Annual Education Fund Golf Tournament was held Friday, April 7, at the Ala Wai Golf Course. Golf Committee Chair Rouen Liu extends a big mahalo to all participants and volunteers for yet another successful event. Proceeds will sustain the Chapter's education fund which provides annual monetary awards at the State Science and Engineering Fair and annual partial scholarships towards higher education.

continued on page 7



The winning team (Team Ron N.S. Ho & Associates, Inc.) with President Ryan Char.



2016-2017 ASCE Hawaii Section Officers

President:	Tim Goshi, P.E. email: tgoshi@ascehawaii.com
Pres.-Elect:	Lara Karamatsu, P.E. email: lkaramatsu@ascehawaii.org
Vice Pres.:	Eric Arakawa, P.E. email: earakawa@ascehawaii.org
Treasurer:	Jason Kage, P.E. email: jkage@ascehawaii.org
Secretary:	Dayna Nemoto-Shima, P.E. email: dnemoto@ascehawaii.org
Past Pres.:	Ben Rasa, P.E. email: brasa@ascehawaii.org
YMF Pres.:	Norman Leong, P.E. email: nleong@ascehawaiiymf.org

MAY LUNCH MEETING (MAUI)

Our May meeting will be in Maui on Friday, May 12, 2017. Please visit www.ascehawaii.org for updates.

EXECUTIVE COMMITTEE MEETING

Last held: Wednesday, April 5, 2017
Next meeting: May 3, 2017

INFRASTRUCTURE REPORT CARD

The 2017 Infrastructure Report Card has just been released on March 9th. Every 4 years, a group of civil engineers provide a comprehensive assessment of our nation's infrastructure across 16 categories. The overall infrastructure grade is a D+, unchanged since the 2013 report card. Three categories received a decline in grade, while seven saw slight improvements and six remain unchanged. Key solutions include investment, leadership & planning, and preparing for the future. ASCE estimates that the nation's infrastructure needs a total of \$2 trillion over the next 10 years, across all categories.

To read more about the grades and solutions, visit <http://www.infrastructurereportcard.org/>.

Hawaii is the only one in Region 8 that does not have a state report card. If you would like to help create one for Hawaii, please contact Tim Goshi, tgoshi@ascehawaii.org.

CONTINUING EDUCATION

ASCE National holds more than 275 seminars, courses and computer workshops each year on a wide variety of technical, management, and regulatory topics. These seminars are held in more than 45 cities across the U.S. In addition, ASCE offers customized on-site training and many distance learning programs, including live interactive web/teleconference seminars, online courses and courses on CD, videotape, and audiotape. Please visit <http://www.ascehawaii.org/links.html> and click on ASCE National for complete details.

ASCE HAWAII SECTION STUDENT SCHOLARSHIPS

Please help us increase our scholarship endowment so that we can recognize deserving students. We continue to accept tax-deductible donations with the goal of increasing the annual scholarships. Make your check payable to 'ASCE Hawaii Section' and mail to: ASCE Scholarship Committee, P.O. Box 917, Honolulu, HI 96808-0917. If you have any questions, please contact Glenn Miyasato at 488-7579, or gmiyasato@ascehawaii.org.

ASCE JOB LISTINGS

The following job listings are currently posted on the ASCE Hawaii Section website:

- Civil Engineer – AECOM
 - Assistant Program Administrator – City and County of Honolulu
 - Civil Engineer V (Geotechnical) – City and County of Honolulu
 - Civil Engineer V – City and County of Honolulu
 - Mechanical Engineer V – City and County of Honolulu
 - Design and Construction Branch Chief - City and County of Honolulu
 - Junior Engineer – GPRM Prestress
 - Civil Engineer – Group 70
 - Project Manager – Group 70
 - Senior Geotechnical/Geological Engineer – Hart Crowser
 - Project Geotechnical/Geological Engineer – Hart Crowser
 - Construction Project Engineer – Jas. W. Glover, Ltd.
 - Project Manager – Kennedy/Jenks Consultants
 - Staff Engineer (Honolulu Office) – Kennedy/Jenks Consultants
 - Staff Engineer (Hawaii Offices) – Kennedy/Jenks Consultants
 - Principal Project Control Engineer/Specialist, AIRPORT - Parsons
 - Civil Engineer V – SSFM International
 - Structural Engineer IV – SSFM International
- For further information on these job listings or to find out how you can post job openings in your company on this website, please visit <http://www.ascehawaii.org/job-listings.html>.



2016-2017 YMF Officers

Norman Leong, President
nleong@ascehawaiiymf.org
Jordan Urabe, Vice President
jurabe@ascehawaiiymf.org
Nicole Nakaoka, Secretary
nnakaoka@ascehawaiiymf.org
Austin Wong, Treasurer
awong@ascehawaiiymf.org
Amanda Tanaka, Past President
atanaka@ascehawaiiymf.org

YMF General Meeting

The next YMF general meeting is scheduled for Thursday, May 4, 2017 at 6:00 pm at Fort Shafter Bowling Alley. If you are interested in attending and learning more about the various professional, social and service opportunities available through YMF, please contact YMF at ymf.hawaii@gmail.com.



P.O. Box 88840
Honolulu, HI 96830
Website: www.acechawaii.org

2016-2017 Board of Directors

President - Corey Matsuoka, SSFM International
President-Elect - Jeff Kalani, Yogi Kwong Engineers
Treasurer - Sean Sugai, Ronald N.S. Ho & Associates
Secretary - Ken Kawahara, Akinaka & Associates, Ltd.

LETTER FROM THE ACECH PRESIDENT

Written by Corey Matsuoka,
P.E., PMP, LEED AP

Remember "I'm Just a Bill" by Schoolhouse Rock!? It's about how a bill becomes a law, and that was the extent of my legislative knowledge for a long time. Turns out, it's much more complicated than that. Who know right? Well it turns out, ACECH does.

Lead by its Legislative Committee, ACECH remains active at the Capitol, protecting public interest relative to the built environment, and enhancing the business interest of the engineering profession. Committee members spend hundreds of hours a year, going through potential legislation, meeting with legislators, providing testimony and even testifying in person. It's a tremendous service they do for the engineering community.

This year, the major issues we are following are:

- ✓ Protection of Qualification Based Selection for professional services from potential erosion via numerous procurement related bills.
- ✓ Funding for the State Building Code Council (which is currently not funded).
- ✓ Addressing the potential suspension of the National Flood Insurance Program in Hawaii' by FEMA.
- ✓ Infrastructure funding proposals.
- ✓ Changes to the sick leave requirements that a business provides to its employees.

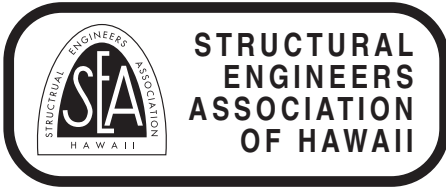
At the end of April, a delegation representing ACECH will also be going to ACEC's Annual Convention in Washington DC where we will be meeting with our local delegation of Representatives and Senators. Two things we will be discussing with them are:

- ✓ Support for a major infrastructure package this year that includes both incentives for public-private partnerships (P3s) and innovative financing, as well as additional direct federal spending to support core federal infrastructure programs, including the Highway Trust Fund and programs to support water projects;
- ✓ Comprehensive tax reform legislation that treats all business structures equally, and one that provides the funding and financing mechanisms to support the infrastructure package.

These issues significantly impact engineering firms and ACECH continues to protect our member's interest. If you're interested in participating in our legislative committee and learning all the things beyond "I'm Just a Bill", please let us know.

Corey Matsuoka, P.E., PMP, LEED AP
ACECH President (FY 2016-2017)

**Deadline for
Wiliki
is May 15th**



PO BOX 3348, HONOLULU, HI 96801
 Web Page URL <http://www.seaoh.org>

2017 BOD OFFICERS AND DIRECTORS

President	Jonathan Murai	791-3952
	jmurai@kaihawaii.com	
Vice President	Jeffrey Cudiamat	488-5000
	jcudiamat@structuralhawaii.com	
Secretary	Andrew Pang	535-3008
	andrewp@nagamineokawa.com	
Treasurer	Reid Nishimura	521-6958
	reid.nishimura@englekirk.com	
Director (Yr 2)	Damien Enright	845-2474
	structurs001@hawaii.rr.com	
Director (Yr 2)	Ryan Lawton	208-1433
	rlawton@histructures.com	
Director (Yr 1)	Michael Greer	591-2728
	mgreer@wje.com	
Director (Yr 1)	Deborah Kim-Ito	271-2862
	dkimito@pono-gms.com	
Past President	Jeffrey Hanyu	536-2108
	jeffreyhanyu@allisonide.com	

PREVIOUS BOD MEETING

April 7, 2017

Code Committee is tracking two bills in the Legislature that would fund the State Building Code Council so that the amendments to the 2012 International Building Code can be administered. SEAHO has submitted letters in support of the bills.

Scholarship for Young Member Group to NCSEA Summit

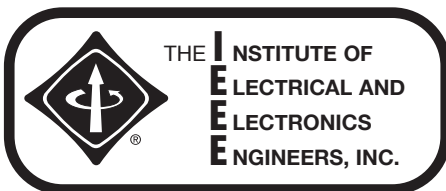
Applications for NCSEA scholarships for YMG members to attend the annual summit in Washington, D.C. during October 11-14, 2017 are available. Scholarships include summit registration and a \$500 travel stipend. Contact Jonathan Murai for more information.

General Membership Meetings/Technical Seminars/Events

For all events see seaoh.org or look for email flyer for registration.

- SEAHO Annual Convention – August 25 and 26, 2017, Aulani Resort & Spa, details to be announced.
- SEAHO Golf Tournament – October 20, 2017, Hoakalei Country Club, details to be announced.

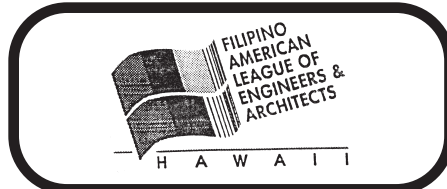
Next Meeting on May 3, 2017. For information, contact SEAHO President; Jonathan Murai jmurai@kaihawaii.com.



IEEE Hawaii Section

Hawaii Section Officers

Section Chair:	John Borland
Vice-Chair:	Al Toda
Treasurer:	Mark Rognstad
Secretary:	Grant Torigoe



P.O. Box 4135, Honolulu, Hawaii 96812
 Website: <http://www.falea.org>

2017-18 Officers/BoDirectors

President:	Gene C. Albano, Jr., PE, LEED AP
VP/Pres-Elect:	Ferdinand B. Guinto, PE
Secretary:	Majella D. Stevenson, PE
Treasurer:	Riza Marie R. Gatdula, EIT
Auditor/	
Bus. Manager:	Nick A. Orense, PE
Press Rel. Off:	John C. Ramos, PE, CSP
Past President:	Francisco T. Cruzata, AIA
Directors:	Elvi M. Sutherland
	Angie L. Armas
	Maritez A. Marquez
	Belinda P. Tegui
	Joey G. Resurreccion

APRIL/MAY 2017 HIGHLIGHTS:

FALEA BOARD SCHOLARS DINNER – April 8, 2017, @ Buzz's Original Steakhouse in Pearl City. Good feedback from attendees to this special event including FALEA President Gene Albano who sent the following message: "I just wanted to thank everyone for a very nice evening that included an incredible act of kindness by the Sapigao's in matching the scholarship given to Christina Agustin. Her courage to share her personal story was so very touching I am sure everyone was emotionally affected by her speech. As mentioned that night, the

2017 scholarship cohort is now on their task to develop the first "Kamiseta" which will be the first fundraising effort to increase the FALEA Foundation funding. I'll be personally mentoring the group on collaboration and if there is anyone who like to also be involved please let me know. I intend to always be involved with "Kamiseta" as FALEA continues."

NEXT FALEA BOARD MEETING – Notices, along with the Agenda should have been sent out by the time you read this.

HAVE A GREAT AND SAFE MONTH!!



<http://www.hawaiispe.org/>

HSPE Officers, 2016 to 2017

President:	Mike Silva, PE, LS, LEED AP
	mike@femaui.com
President Elect:	Mike Kamaka, PE
	mkamaka@bowersandkubota.com
Vice President:	Michael A. Lum
	mlum@bowersandkubota.com
Past President:	Curtis Beck, PE
	curt137inverse@yahoo.com
House of Delegates Rep:	Majella Stevenson, PE
	MujTravel@aol.com
Secretary:	Irina Constantinescu, PE, LEED AP
	IConstantinescu@brwncaid.com
Treasurer:	Kurt Kunimune, PE
	kkunimune@bowersandkubota.com



CCMAA Hawaii Chapter

<http://hawchapter.cmaa.org>

2016 – 2017 CMAA Hawaii Board

PRESIDENT: Chandra Namumnart, CCM, CISEC (EKNA Services, Inc.)

VICE-PRESIDENT: Jeff Mack, P.E. (CH2M)

SECRETARY: Julie Hero, P.E., CCM (SSFM International)

TREASURER: Alex Pascual, P.E. (Bow Construction Management Service, Inc.)

PAST PRESIDENT: Bill Thornton, CCM (Ledcor)

DIRECTOR: Derek Mukai, P.E., CCM (Community Planning and Engineering, Inc.)

DIRECTOR: Tim Bramsen, CCM (Bowers + Kubota Consulting)

DIRECTOR: Mike Young, P.E., CCM (Bowers + Kubota Consulting)

DIRECTOR: Jeff Clark (Flour)

CMAA Hawaii Chapter News:

CMAA Hawaii has a lot going on in April and May! In April, we held our 2nd Happy Hour/networking event at Mai Tai's Ala Moana which was well attended and (as always) lots of fun. We followed this up with our 2nd community service event of our 2017 year on April 22nd, working to assist the YWCA in Kaneohe on a beautification project that will benefit our Windward side Ohana. Thanks to Frank Parker for his efforts to facilitate this event and to all of our members who participated in the event. If you would like to join this committee and help organize these worthwhile activities, please contact our community Service Chair Frank

Please join us for **CMAA Hawaii Chapter's 6th Annual Mini-Conference**

on May 18, 2017, at the majestic Ko'olau Ballrooms on windward Oahu. From 8:00 am to 3:00 pm, we will have presentations from various professionals in the Engineering and Construction industry, with a Happy Hour Reception to follow.

PROGRAM:

- 8:00 a.m. – Registration / Exhibits Open
- 9:00 a.m. – Morning Sessions
- 11:30 a.m. – Luncheon Buffet
- 1:00 p.m. – Afternoon Sessions
- 2:45 p.m. – Program Ends
- 3:00 p.m. – Social Hour (pau hana, pupus will be provided)

SPEAKERS:

- Session 1: Paul Brussow, Rider Levett Bucknall
- Session 2: Michael Carroll, Bays Lung Rose & Holma
- Session 3: Norman Takeya, Honolulu Community College
Luncheon Speaker: Frank Hopkins, CH2M & Wai Yi Ng, C&C Honolulu
- Session 4: Curtis Motoyama, ADA Specialist for HDOT
- Session 5: Mary Sullivan, Lawson & Associates
- Session 6: Jim Kelly, HECO

Price is \$100 for members, \$150 for non-members, and \$50 for students.

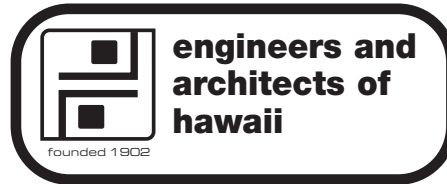
Online Registration-

<https://docs.google.com/forms/d/e/1FAIpQLSevudSzZ58vkFhW8HVYIMhFmfHwlit4yRxCzCdAtY7MvcZGiA/viewform>

Parker at Frank.Parker@ch2m.com.

We will be opening the enrollment period for the **2017 Professional Construction Management (PCM) class** next month- Last year this class sold out- so if you would like a seat- please don't procrastinate!

We are also accepting applications for the **CMAA Hawaii 2017 Scholarships**; CMAA Hawaii will award 2 scholarships for \$1000 each to full time undergraduate students currently enrolled at Honolulu Community College or University of Hawaii and interested in or pur-



PO. Box 1901, Honolulu, HI 96805-1901
An association for Hawaii's Engineers and Architects
WEB address: www.eahawaii.org

EAH 2016- 2017 Officers

President	Sam Gillie, PE	542-4739
1st VP	Dave Martin PE	543-4504
2nd VP	Open	
Treasurer	Aaron Erickson, PE	591-2728
Secretary	Gary Yamamoto, PE	485-2777
Stg-At-Arms	Martin McMorrow	256-4713
Director	Phil Blackman	
Director	Howard Wiig, PE	587-3811
Director	Bill Brizee, AIA	523-9636
Past Pres	Michael Albright	

EAH's new meeting location is Room 301 in the Topa Tower (Ewa tower on Fort Street; Old AMFAC Building). Validated parking is available (enter from Nimitz). The WEB site has been updated to provide directions and a Map. If you have questions please call Sam Gillie (543-4739).

Meetings are held every Friday (except Holidays). Meetings start at NOON and have ended PROMPTLY at 1:00 pm for 70 Years.

Program schedule may be adjusted. Call Sam Gillie to confirm speaker 543-4739; Fax 203-1335.

Lunch is \$10.00 Members, \$12.00 Guests. (All Welcome), Students Free. Drink refreshments are complimentary. You may bring your own lunches, in which case a \$2.00 donation is gratefully appreciated!!

suing a major/minor in Construction Management, or a dependent of an active CMAA Hawaii Chapter/Student Chapter member who has been accepted to attend a university or college and is interested in Construction Management with a cumulative GPA of 3.0 or higher. If you are interested in applying for one of these scholarships, please watch for our email blasts with more information and links to the application. Due date for submission is Friday June 30, 2017 at 4pm. Don't miss this opportunity!

We would love for you to be a part of the excitement that is CMAA Hawaii. Our chapter is here as a resource for **all** Construction Engineering and Management professionals, and the things that we do benefit not only our CM community but our larger Ohana as well.

If you have any questions regarding any of our upcoming events, would like to join our Ohana and become more involved with the CMAA Hawaii Chapter or would simply like to be added to our email list, please email us at hawaii.cmaa@gmail.com, or at our mailing address: CMAA Hawaii, PO Box 531, Honolulu, HI 96809.

Looking for a CCM? The current listing for all Hawaii CCMs can be found here: <https://cmaanet.org/certified-construction-managers-registry>.



SWE – Hawaiian Island Section
 P.O. box 61728
 Honolulu, HI 96839
Swe.hisection@gmail.com

Executive Committee:

President:	Chancy Hopper ArdentMC
Vice Pres.:	Valerie Mencias
Secretary:	Tiffany Au
Treasurer:	Anita Lenk
Section Rep.:	Rena Ting HECO
Alt Sec Rep.:	Pearl Yamaguchi

WILIKI ADVERTISERS NEEDED

5" x 2" – (10□) \$64.00	<table border="1" style="width: 100%; border-collapse: collapse;"> <tr> <td style="width: 50%; text-align: center; padding: 5px;"> 2⁵/₁₆" x 2¹/₂" (6□) \$40.00 </td> <td style="width: 50%; text-align: center; padding: 5px;"> 7¹/₂" x 5" – (37¹/₂□) ½ page – \$240.00 </td> </tr> <tr> <td colspan="2" style="text-align: center; padding: 5px;"> 4⁷/₈" x 2⁵/₁₆" (11□) \$72.00 </td> </tr> <tr> <td style="text-align: center; padding: 5px;"> 2⁵/₁₆" x 1¹/₄" \$20.00 </td> <td></td> </tr> </table>	2 ⁵ / ₁₆ " x 2 ¹ / ₂ " (6□) \$40.00	7 ¹ / ₂ " x 5" – (37 ¹ / ₂ □) ½ page – \$240.00	4 ⁷ / ₈ " x 2 ⁵ / ₁₆ " (11□) \$72.00		2 ⁵ / ₁₆ " x 1 ¹ / ₄ " \$20.00	
2 ⁵ / ₁₆ " x 2 ¹ / ₂ " (6□) \$40.00	7 ¹ / ₂ " x 5" – (37 ¹ / ₂ □) ½ page – \$240.00						
4 ⁷ / ₈ " x 2 ⁵ / ₁₆ " (11□) \$72.00							
2 ⁵ / ₁₆ " x 1 ¹ / ₄ " \$20.00							
7 ¹ / ₂ " x 3 ⁵ / ₁₆ " – (25□) (½ page) – \$160.00							

The price for the ads will be based on a 1¹/₄" x 2⁵/₁₆" module size which is 1/24th of the page, and be \$20.00 per month with a 15% DISCOUNT for a 6-MONTH RUN.

