

2006 CONCRETE ACHIEVEMENT WINNERS

Hawaiian Cement announced the 2006 winners of its Concrete Achievement contest at an Awards Dinner held at The Kahala Hotel and Resort on Friday, November 17, 2006.

The event recognizes concrete structures, built in the state over the last two years, along with members of its building team.

Once again, the jury panel was shuttled around (statewide) to each entry to conduct onsite judging. Members of this year's jury were:

Building Industry Association of Hawaii

MR. ALAN SHINTANI, Alan Shintani, Inc.
MR. WILLIAM PAIK, Grace Pacific Corporation

General Contractors Association of Hawaii

MR. GLEN KANESHIGE, Nordic Construction, Ltd.
MR. DARREL GOO, Grace Pacific Corporation

Hawaii State Council/AIA

MR. GLENN YOKOTAKE, Architects Hawaii, Ltd.
MR. MARK TAGAWA, Leo A. Daly

Structural Engineers Association of Hawaii

MR. BENNETT FUNG, SSFM International, Inc.
MR. DEAN DOI, Sato & Associates, Inc.

Substituting for University of Hawaii School of Architecture

MR. CHARLES EHRHORN, Charles Ehrhorn, AIA

University of Hawaii, College of Engineering

DR. DAVID MA, UH College of Engineering
And the winners are:

JUDGES AWARD

University of Hawaii
John A. Burns School of Medicine
Owner: University of Hawaii
Developer: Research Corporation of the University of Hawaii
Architect: Architects Hawaii, Ltd.
Structural Engineer: SSFM International, Inc.
General Contractor: Hawaiian Dredging/Kajima-JABSON, a Joint Venture

NEW LOW-RISE BUILDING AWARD

Imiloa Astronomy Center of Hawaii
Owner: Imiloa Astronomy Center of Hawaii, University of Hawaii at Hilo
Architect: Durrant Media Five
Structural Engineer: Durrant
General Contractor: Taisei Construction Corporation

NEW LANDSCAPING PROJECT WITH CONCRETE PRODUCTS AWARD

HOKUA AT 1288 ALA MOANA
Owner: Hokua Development Group
Architect: Brownlie and Lee
Designer: Handel Architects LLP

General Contractor: Albert C. Kobayashi, Inc.

REMODELED/ADDITION BUILDING AWARD

OCEAN VILLAS AT TURTLE BAY
Owner/Developer: Kuilima Resort Company
Architect: Wimberly Allison Tong & Goo
Structural Engineer: Englekirk Partners Consulting Structural Engineers, Inc.
General Contractor: Armstrong Builders, Ltd.

NEW SINGLE-FAMILY RESIDENCE AWARD

PRIVATE RESIDENCE
Owner: Private Owner
Architect: John Hara Associates, Inc.
Structural Engineer: Englekirk Partners Consulting Structural Engineers, Inc.
General Contractor: Keauhou Kona Construction Corp.

NEW CONCRETE PAVING AWARD, CATEGORY B

MOANALUA FREEWAY RESURFACING, HALAWA INTERCHANGE TO KAHAUKI INTERCHANGE
Owner: State of Hawaii, Department of Transportation, Highways Division
Structural Engineer: State of Hawaii, Department of Transportation, Highways Division
General/Paving Contractor: Hawaiian Dredging Construction Company, Inc.

NEW PRIVATE BUILDING AWARD

215 NORTH KING STREET CONDOMINIUM
Owner/Developer: Downtown Affordables, LLC
Architect: Kazu Yato, AIA & Associates, Inc.
Structural Engineer: Libbey Heywood, Inc., Structural Engineers

General Contractor: Hawaiian Dredging Construction Company, Inc.

NEW PUBLIC BUILDING AWARD

THE KAUAI JUDICIARY COMPLEX
Owner: State of Hawaii Judiciary
Developer: State of Hawaii, Department of Accounting and General Services
Architect: Anbe, Aruga & Ishizu Architects, Inc.
Structural Engineer: Mitsunaga & Associates, Inc.
General Contractor: Unlimited Construction Services, Inc.

NEW CONCRETE PAVING AWARD, CATEGORY A

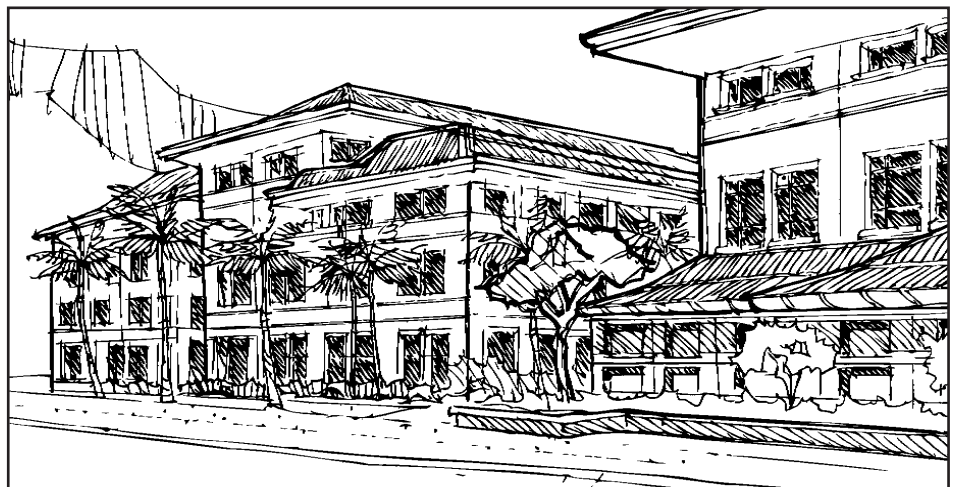
HIKIMOE STREET IMPROVEMENTS FOR CITY EXPRESS BUS SERVICE
Owner: City & County of Honolulu, Department of Transportation Services
Structural Engineer: Wilson Okamoto Corporation
General/Paving Contractor: HaRon Construction, Inc.

CONCRETE STRUCTURE BUILT BEFORE 1940 AND STILL IN USE AWARD

HAWAII THEATRE CENTER
Owner: Hawaii Theatre Center
Architect: Emory and Webb
General Contractor: Pacific Engineering Company

Artist rendering of Judges Award, John A. Burns School of Medicine. See artist renderings of the other winning projects on page 7.

University of Hawaii John A. Burns School of Medicine (Oahu)





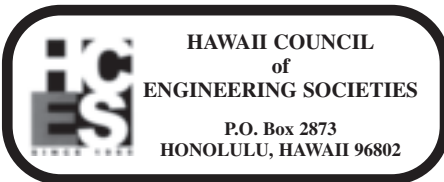
Published monthly by:

HAWAII COUNCIL OF ENGINEERING SOCIETIES
 SERVICE PRINTERS, INC.
 1829 Dillingham Boulevard • Honolulu, HI 96819
 Telephone: (808) 841-7644 • Fax: (808) 847-1487
 ADDRESS ARTICLES FOR PUBLICATION TO:
 WARREN YAMAMOTO
 1526-C Pukele Avenue • Honolulu, HI 96816
 Telephone: 527-6988

WILIKI MAILING LIST

Additions and/or corrections to the Wiliki mailing list should indicate the proper society, institution or association. Corrections to email addresses should be submitted to your society coordinator.

Laverne Higa
 Department of Facility Maintenance
 1000 Uluohia Street, Suite 215
 Kapolei, Hawaii 96707
 Office: 808-692-5054
 Fax: 808-692-5857



HOME PAGE: <http://hces.us>

2006-2007 OFFICERS

| | | |
|-------------|--------------------|----------|
| Chair: | Todd Barnes | 275-2901 |
| Vice Chair: | Maelyn Uyehara | 521-2641 |
| Secretary: | Queenie Komori | 543-4526 |
| Treasurer: | Walter Billingsley | 846-3232 |

| SOC | Representative | Alternate |
|-----------|----------------|-------------|
| AACE | M. Uyehara | |
| ASCE | W. Chun | K. Niiya |
| ASME | J. Grogan | R. Liu |
| EAH | M. McMorrow | G. Yamamoto |
| FALEA | M. Shoji | |
| HALS | E. Kaneshiro | |
| HSPE | K. Rappolt | Q. Komori |
| IEEE | G. Torigoe | O. Libed |
| ITE | C. Yoshida | R. Archilla |
| LGSEA | W. Wong | |
| SAME | T. Barnes | |
| SEAOH | D. Doi | |
| SFPE | S. Dannaway | |
| UH(assoc) | S. Choi | |



2005-2006 OFFICERS

| | |
|-----------|-------------------------------------|
| President | Maelyn Uyehara |
| Vice Pres | Thomas Taam |
| Treasurer | Dr Amarjit Singh |
| Secretary | Jian Zhou |
| Directors | Alan Cadieux, Anas Nasr, Cassie Yap |



**Engineers Week 2007
 Sponsorship Opportunities
 February 18-24, 2007**

The Hawaii Council of Engineering Societies (HCES) will once again be organizing events during Engineers Week 2007 that include a luncheon, exhibit, and banquet. As in previous years, the Engineers Week Exhibit will be held at Kahala Mall from February 18-24, 2007. Static displays created by local companies/organizations will be on exhibit throughout the week. In addition, the Hawaii Space Grant Consortium will be hosting interactive science demonstrations at Kahala Mall's Center Stage on Saturday, February 24th.

This year, HCES is seeking sponsors to support Engineers Week 2007 events. Your contribution will ensure that we are able to achieve our goal of bringing public attention to the work and contributions of engineers, as well as, cultivating interest in engineering, science, and math among our youth.

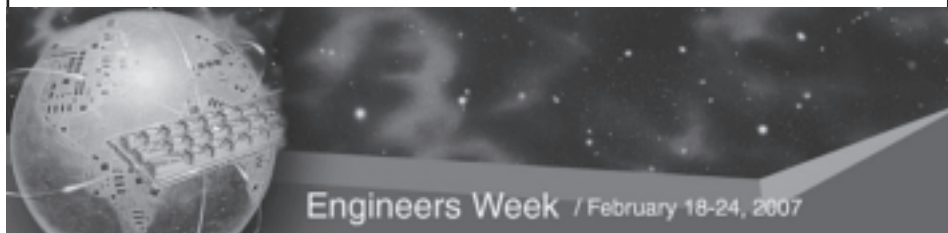
Sponsorship of Engineers Week 2007 events will provide your company or organization with excellent exposure! Your company/organization's logo will be displayed prominently at Kahala Mall for the duration of the Exhibit. In addition, your company/organization will be recognized in the Wiliki, as well as, during the Engineers Week luncheon and banquet.

Sponsorship Levels

Gold \$500

Silver \$250

To explore other sponsorship opportunities, please contact Cathy Leong at (808) 946-2277 or cleong@wilsonokamoto.com.



**ENGINEERS WEEK 2007
 SPONSORSHIP PLEDGE FORM**

Sponsoring Company:

Company Name _____

Contact Name _____

Street Address _____

City, State/Province, Zip/Postal Code _____

Phone _____ Fax _____

E-mail _____

Sponsorship LEVEL:

Gold (\$500) \$ _____

Silver (\$250) \$ _____

(Please contact Cathy Leong at (808) 946-2277 for other sponsorship opportunities.)

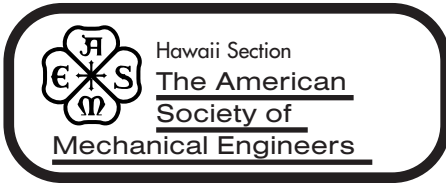
Total Sponsorship \$ _____

Authorized Signature: _____ Date: _____

NOTE: To be included in printed promotional materials, completed sponsorship forms and payment must be received no later than December 31, 2006.

Complete this form and return with check or money order payable to "HCES" to:

Cathy Leong
 c/o Wilson Okamoto Corporation
 1907 S. Beretania St., Suite 400
 Honolulu, HI 96826
 Fax (808) 946-2253



Website: www.sections.asme.org/hawaii

ASME-HI 2005-2006 Officers

| | | |
|-------------|-----------------|----------|
| Chairperson | Raymond Liu | 521-3773 |
| Vice-Chair | Derick Kam | 848-6966 |
| Secretary | Ron Flegal | |
| Treasurer | Kevin Dang | 737-1708 |
| Dir 2 yr | James Grogan | 254-2947 |
| Dir 1 yr | Chester Kaitoku | 527-6063 |

NEXT ASME-HAWAII SECTION MEETING

Date: January 9, 2007
 Time: 5:30 pm to 7:00 pm
 Agenda: To be announced
 Place: Hawaiian Electric Ward Avenue Cafeteria

Please contact Ray Liu or Ron Flegal for directions and for more information.

VOLUNTEERS NEEDED FOR FLL HAWAII CHAMPIONSHIP TOURNAMENT

The FIRST Lego League (FLL) inspires and celebrates science and technology to children ages 9-14, using real world context and hands-on experimentation.

With the help of LEGO MINDSTORM technology, young participants can build a robot and compete in a friendly robotics event specially designed for their age group. Using LEGO bricks and other elements such as sensors, motors, and gears, teams gain hands-on experience in engineering and computer programming princi-

ples as they construct and program their unique robot inventions. Judges, referees, and volunteers are needed to help at the 2006 FLL Competition. The FLL competition will be held at University of Hawaii Manoa Campus Center Ballroom on December 2, 2006. Judges will evaluate the research project. Referees will tabulate the match scores. Volunteers will assist in coordination of the event. This year's challenge is nanotechnology. There will be a training session in the middle of November to assist all volunteers. If interested please contact Kevin Dang at 737-1708 or at dangk001@hawaii.rr.com. For more information check out www.usfirst.org or www.firstlegoleague.com. ASME is a generous sponsor of FLL.

RODNEY KRIENKE AT KENNEDY SPACE CENTER

Our past-Vice Chairman Rodney Krienke has left the islands (temporarily) and accepted an engineering job at the Kennedy Space Center in Florida. He is working on the next-generation rockets and vehicles to replace the space shuttle to return to the moon and possibly Mars. We hope to get update status of Rodney's and his family's adventures and possibly photos to show on our website. Krienke was a Mechanical Engineer at the Pearl Harbor Naval Shipyard. He is an ME graduate from the University of Alabama (Huntsville).

ASME STUDENT AND SENIOR SECTIONS IN A JOINT FUNDRAISER

On November 11, the Student and Senior Sections worked side-by-side at the Royal Blendz concession at the UH - La Tech Football Game at Aloha Stadium in a joint fundraiser. At

(continued on page 11)



www.sfpehawaii.org

OFFICERS

| | | |
|-----------|--|----------|
| President | Melvin K. Harano, P.E. | 848-6966 |
| | harano@thermaleng.com | |
| Vice-Pres | Robert T. Bigtas, P.E. | 526-9019 |
| | Rbigtas-ssda@hawaii.rr.com | |
| Secretary | Derick Kam | 848-6966 |
| | kam@thermaleng.com | |
| Treasurer | Samuel S. Dannaway, P.E. | 526-9019 |
| | Sdannaway-ssda@hawaii.rr.com | |
| Past Pres | Robert Lohaus, P.E. | 833-4095 |
| | lohausebob@hawaii.rr.com | |
| Directors | Michael J. Orłowski | 474-3819 |
| | Michael.orłowski@navy.mil | |
| | Robert M. Miller, P.E. | 951-7215 |
| | fpehi@hawaii.rr.com | |
| Webmaster | Derick Kam | |
| | kam@thermaleng.com | |

Automatic Fire Alarm Association and the Hawaii SFPE are cosponsoring the following seminar events at the Hale Ikena at Fort Shafter

FIRE ALARM SYSTEM TESTING & INSPECTIONS SEMINAR

January 8, 2007

Costs- AFAA & SFPE members, their employees, and government employees- \$199 ea.

| | |
|-------------|-----------|
| 3 or more | \$179 ea. |
| Non-members | \$249 ea. |
| 3 or more | \$225 ea. |

(continued on page 11)



FBI
 Federal Bureau of Investigation

For more information contact:
Special Agent Kai Wong
 (808) 566-4300
 An Equal Opportunity Employer
www.fbijobs.gov

- ⊕ Male and Female special agents
- ⊕ Bachelor's or graduate college degree from an accredited institution
- ⊕ Nationwide employment
- ⊕ Computer Science/Information Technology, Engineering, Sciences (Architecture, Bio-chemistry, Biology, Chemistry, Forensics, Mathematics, Nursing, Physics, medical specialties), Law, Languages, Accounting/Finance, Intelligence, Foreign Counterintelligence, Counterterrorism
- ⊕ 2-3 years strong professional/investigative/managerial work experience desired
- ⊕ 23-36 years of age
- ⊕ Drug policy/drug testing mandatory
- ⊕ Entry-level salary (GS-10) is \$50,383 Academy training; \$60,666 - \$68,632 upon graduation, including locality/availability pay



FBI Special Agents

AMERICA'S FINEST

honolulu.fbi.gov





FY 2007 ASCE Hawaii Section Executive Committee

| Office | Phone | FAX |
|--------------------|---|----------------------|
| President | Lori Fong email: lfong@ascehawaii.org | 384-5372 |
| Pres-Elect | Ron Iwamoto email: ron@iwamotollc.com | 486-5202 486-5206 |
| Vice-Pres | Mike Hunnemann email: mike@kaihawaii.com | 791-3980 533-2686 |
| Secretary | Jeff Kalani email: jeff@yogikwong.com | 596-2928 |
| Treasurer | Roger Babcock email: babcock@eng.hawaii.edu | 956-7298 |
| Past Pres | Walter Billingsley email: wbillingsley@beltcollins.com | 846-3232 538-7819 |
| Region 8 Chair: | Westley Chun, Ph.D., P.E. | |

DECEMBER DINNER MEETING

There will be no dinner meeting in December. Have a safe and happy holiday season!

JANUARY DINNER MEETING

Program: *** TO BE ANNOUNCED ***
 Date: Thursday, January 18, 2007
 Location: Treetops at Paradise Park, Manoa Valley
 Time: 5:30 p.m. - Social Time
 6:30 p.m. - Dinner
 7:30 p.m. - Program
 9:00 p.m. - Adjourn
 Menu: Multi-entree buffet
 Cost: \$22.00 for Hawaii Section members
 \$25.00 for non-section members and guests
 \$11.00 for University of Hawaii at Manoa Student Chapter members

Please make checks payable to ASCE-Hawaii Section and mail to Roger Babcock, ASCE Treasurer, Department of Civil & Environmental Engineering University of Hawaii at Manoa, 2540 Dole Street, Holmes 383, Honolulu, Hawaii 96822-2303 postmarked by Monday, January 9, 2007. Reservations for the dinner meeting to Roger Babcock by Monday, November 6, 2006, by phone at 956-7298, fax at 956-5014 or email at rbabcock@hawaii.edu.

EXECUTIVE COMMITTEE MEETING

December 19, 2006

SEMINARS, WORKSHOPS, & CONTINUING EDUCATION

Leadership Development for the Engineer
 Date: Jan. 25 & 26, 2007
 Location: Radisson Waikiki Prince Kuhio Hotel
 Cost: \$985 for members (\$1,195 for non-members)
 Registration: 888-557-4422
 Instructor: Charles Calhoun, Jr., P.E., F. ASCE

This updated seminar is intended to develop or expand your leadership skills. You will learn how to: successfully lead an organization or a department; understand yourself and your staff including generational differences; apply a leadership style which is appropriate to the situation; apply systematic decision-making processes while considering the critical role of intuition; lead change while maintaining motivation; apply the "art" of leadership or the "discipline" of management; effectively communicate and provide feedback considering the differences in the way men and women communicate; and form and lead

effective teams. The seminar includes one hour of ethics training.

ASCE HAWAII SECTION STUDENT SCHOLARSHIPS

Please help us increase our scholarship endowment so that we can recognize those deserving students. We continue to accept tax deductible donations with the goal of increasing the annual scholarships. Make your check payable to 'ASCE Hawaii Section' and mail to ASCE Scholarship Committee, P.O. Box 917, Honolulu, HI 96808. If you have any questions, please contact Keith Niya at 533-3646, or kni-ya@atahawaii.com.

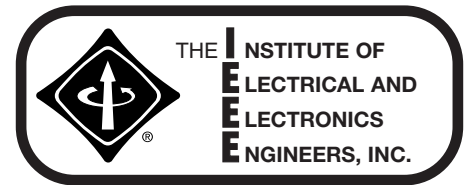
ASCE JOB LISTINGS

The following employers have openings they would like to fill:

- Austin Tsutsumi & Associates, Inc. (Civil Engineer - Honolulu and Wailuku, Land Surveyor - Honolulu)
- Bills Engineering Inc. (Civil Engineer, Engineering Assistant & CADD Technician)
- CH2MHILL (Transportation/Traffic Engineer - Honolulu Office)
- Engineering Solutions, Inc. (Civil/Sanitary Engineers - Honolulu)
- Fewell Geotechnical Engineering (Geotechnical Engineer - Honolulu)
- Fukunaga & Associates (Civil and Civil/Environmental Engineers - Honolulu)
- Mitsunaga & Associates, Inc. (Civil Engineers)
- Warren S. Unemori Engineering (Project Engineer, Civil Engineer, & CAD Operator - Wailuku)

For more information on these job listings, please visit the ASCE Hawaii Section website at <http://www.ascehawaii.org/jobs/jobs.html>.

(continued on page 11)



IEEE Hawaii Section

PO Box 37607 Honolulu, Hawaii 96837
 Email: aet@ieee.org
 Web Page: <http://ewh.ieee.org/r6/hawaii/>

2006 Hawaii Section Officers

| | | |
|----------------|---|----------|
| Section Chair: | Al Toda aet@ieee.org | 455-1331 |
| Vice-Chair: | Nancy Roemer NL.Romer@aol.com | |
| Sec.-Treas.: | Mark Rognstad mark_rogstad@ieee.org | |

Season's greetings from the Hawaii Section of the IEEE section. This year saw a continued increase in web services to members. TV shows on the web is an example of this free service. <http://www.ieee.org/web/membership/IEEEtv/about.html>

I hope that 2007 will be a good year for all our members. There was a modest increase of about 100 in our active membership in the recent years indicating a higher level of activity in the state—or we have more than our fair share of retirees recently. It's hard to tell.



2007 HSPE ENGINEER OF THE YEAR AND YOUNG ENGINEER OF THE YEAR AWARDS

In conjunction with the activities of Engineers' Week 2007, the Hawaii Society of Professional Engineers (HSPE) is soliciting nominations for the Hawaii Engineer of the Year and the Hawaii Young Engineer of the Year Awards. HSPE will evaluate candidates for both awards. The selected engineer(s) will be announced at the 2007 Engineers Week Banquet. Completed nomination forms and letters of support must be received *no later than Friday, December 15, 2006 at the following address (electronic submittals only)*:

Hawaii Society of Professional Engineers

c/o Barry Nakamoto
barry.nakamoto@heco.com

Each candidate shall be nominated on the following basis:

Candidate for Engineer of the Year (Nomination Form not to Exceed 8 Pages)

1. Shall be current practicing Licensed Professional Engineer in the State of Hawaii;
2. Shall be current State of Hawaii resident; and
3. Shall not be a State Officer or Director for HSPE.

Candidate for Young Engineer of the Year (Nomination Form not to Exceed 6 Pages)

1. Shall be 35 years of age or less as of Jan. 1, 2007;
2. Shall be a current practicing Licensed Professional Engineer in the State of Hawaii;
3. Shall be a current State of Hawaii resident; and
4. Shall not be a State Officer or Director of HSPE.

Electronic files of the respective nomination forms are available for your use – contact Barry Nakamoto at barry.nakamoto@heco.com. Or you may download the nomination forms from the Hawaii Council of Engineering Societies Web Site at <http://hces.us/special/announcements.html>.

Criteria for Selection of Young Engineer & Engineer of the Year Awards

1. 30% Technical Accomplishment
(Technical Awards, Papers & Presentations, Major Projects, etc.)
2. 35% Professional History & Contributions
(Positions Held, Professional Affiliations, Special Contributions to Profession & Special Recognition, etc.)
3. 20% Civic & Community Contributions
(Affiliations, Position Held, Special Recognition, etc.)
4. 15% Recommendation(s)
(Why the individual is nominated)

No more than 3 letters of support per candidate with maximum 2 page limit per letter.



2006-2007 YMF OFFICERS

| | | Phone |
|----------------|---|---------------------|
| President | Lori Nishida lori.nishida@ch2m.com | 440-0205 |
| Vice-Pres | Lisa Takushi ltakushi@ascehawaii.org | 531-4252 ext. 14 |
| Secretary | Lauren Ishima lishima@hawaiiapacificengineers.com | 440-8496 |
| Treasurer | Morgan LaRue mlarue@ascehawaii.org | 386-0757 |
| Past President | Florence Ching fching@ascehawaii.org | 472-1342 |

Next YMF General Meeting

The next two YMF general meetings are scheduled for Wednesday, December 6, 6:00 p.m., at Hiroshi's Eurasian Tapa's at Restaurant Row, 533-4476; and Wednesday, January 3, 6:00 p.m., at Ryan's Grill at Ward Centre, 591-9132. If you are interested in attending to find out what the YMF is all about, please contact Lori Nishida at 440-0205 or lori.nishida@ch2m.com.

Spring 2007 PE Refresher Course

by Eric Arakawa, YMF PE Refresher Course Chair

Dates: Saturdays, January 28th to March 31st, 2006

Times: 9:00 A.M. to 12:00 P.M.

Location: To be announced.

Cost: \$300 Early Registration Fee for ASCE Hawaii Section Members; \$375 Early Registration Fee for Non-ASCE Hawaii Section Members

Early Registration Deadline is December 31, 2006. Add \$50 late fee to registration fee if payment is postmarked after December 31, 2006. Class size is limited and registration is done on a first-come first-served basis. Prices are subject to change after class begins.

Topics covered include Transportation, Environmental, Geotechnical, Water Resources and Structural. Class attendees will receive a copy of Michael R. Lindeburg's Civil Engineering Reference Manual for the PE Exam (10th Edition), copies of lecture notes, and study supplies. Attendees will also have the option of ordering additional reference material at discounted prices.

To sign up for the Spring 2007 ASCE Hawaii Section YMF P.E. Refresher Course or for more information please visit <http://www.ascehawaii.org/ymf/PErefresher.html> or contact Eric Arakawa at 440-8494 or earakawa@hawaiiapacificengineers.com.

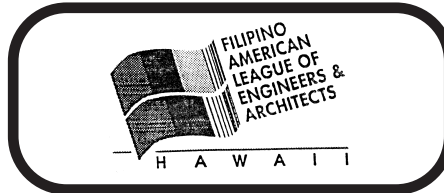
2007 NATIONAL YOUNGER MEMBER AWARDS

by Florence Ching, YMF Awards Chair

The ASCE Hawaii Section YMF is requesting nominations for National Younger Member Awards. Nominations are strongly encouraged to recognize young engineers who have contributed to the enhancement of the general society and the engineering profession. Each year, ASCE recognizes outstanding achievements by its Younger Members through several awards. The Committee on Younger Members administers these awards. The Hawaii Section YMF is seeking nominations for the following National Younger Member Awards:

1. Collingwood Prize – Technical paper describ-

(continued on page 11)



P.O. Box 4135, Honolulu, Hawaii 96812
Website: <http://www.falea.org>

2006-2008 Officers and BoDirectors

| | |
|-------------------------|------------------|
| President: | Napoleon Agraan |
| Vice Pres/Pres Elect: | John Ramos |
| Secretary: | Zosima Agraan |
| Treasurer: | Marisol Tacon |
| Asst. Treasurer: | William Rapisura |
| Business Manager: | Angelie Legaspi |
| Press Relation Officer: | Judy Tabios |
| Auditor: | Nicolo Orense |



Ms. Maria Rodeleen Llamas is a graduate of Waipahu High School and is working to become an Architect. Outstanding members in the field of engineering and architecture were also recognized and the recipients were Ms. Marites Calad

(continued on page 10)



2007 HCES LIFETIME ACHIEVEMENT AWARD CALL FOR NOMINATIONS

In 1997, the Hawaii Council Of Engineering Societies instituted the "HCES Lifetime Achievement Award" which is designed to recognize the lifetime achievements of retired engineers. This annual recognition is given to an individual who has contributed significantly to the development of engineering in the State of Hawaii and who has made a noteworthy impact on the local engineering community. The award is presented annually during the Hawaii Engineers' Week Banquet. The first HCES Lifetime Achievement Award was made on February 27, 1998.

ELIGIBILITY

The following criteria shall be applied when nominating a candidate for the award:

- The nominee shall be affiliated with an HCES member society as an active member.
- The nominee shall have lived and worked in Hawaii as an engineer or engineer-manager for at least 15 years.
- The nominee shall be 62 years or older at the time of nomination.
- The nominee shall have taken retirement from public or private sector employment. The nominee could, however, be continuing employment or consultancy or other work after effective retirement.
- In the case of a nominee who was an entrepreneur who started his/her own company, the nominee shall have actively handed over control of the company to a successor. The nominee may continue to be involved with the company.
- Posthumous awards may be made provided the nominee was an active member of an HCES member society at the time of his/her passing away and fulfilled all the required criteria listed above.

NOMINATION

The following criteria shall apply to the method for nomination:

- Any person belonging to any HCES member organization may nominate a candidate.
- The nomination shall be accompanied by a citation that must effectively highlight, in narrative form, the engineering contributions of the candidate. Special emphasis shall be made on the nominee's contributions to Hawaii.
- The nomination shall include a detailed resume of the nominee.
- The nomination package shall be submitted with a cover letter addressed to the HCES Chair.
- Multiple nominators may nominate a single nominee. The nominations submitted may be a joint or separate nomination. To be considered valid, each nomination package shall be complete.
- A single nominator may nominate multiple candidates. The nomination for each candidate shall be distinct and complete with all necessary documents.
- If the nominee has not been selected in a previous nomination, he or she may be nominated in subsequent years.

The HCES Selection Committee will select the recipient. Five copies of the nomination shall be mailed to: 2007 HCES Lifetime Achievement Award, P.O. Box 2873, Honolulu, Hawaii 96802.

Award nominations must be postmarked on or before December 15, 2006.



2007 Engineers Week Banquet

Saturday, February 24, 2007

Hale Ikena, Fort Shafter Golf Course

(Admission to Fort Shafter will be arranged for registered attendees)

5:30 p.m. Cocktails

6:30 p.m. Dinner

7:15 p.m. Program:

- Presentation of Engineers Week Exhibit Awards.
- Presentation of Engineer of the Year, Young Engineer of the Year, HCES Lifetime Achievement and Student Engineer of the Year Awards.
- Guest Speaker –Dr. Kent M. Keith, Motivational Speaker and author of Do IT Anyway. The Paradoxical Commandments.
- Installation of 2007 HCES officers.

Contact Person/Organization _____

Address _____

Telephone _____ e-mail _____

Special guests have been invited to attend the banquet. These guests may include the Governor, mayors of each county and key engineers in their cabinet.

Would you like to sponsor an invited guest to sit at your table? Please circle one: **Y N**

If yes, we will contact you to link you with available invited guests.

Tables seat 10 people.

Rates are \$37.50 for registration(s) postmarked on or before February 15, 2006, \$45 for registration(s) postmarked after February 15 and \$27.50 for students. Please type or print the name and company/organization affiliation of each attendee. Keep two seats open if you have elected to sponsor an invited guest.

| Name | Company or Organization |
|-----------|-------------------------|
| 1. _____ | _____ |
| 2. _____ | _____ |
| 3. _____ | _____ |
| 4. _____ | _____ |
| 5. _____ | _____ |
| 6. _____ | _____ |
| 7. _____ | _____ |
| 8. _____ | _____ |
| 9. _____ | _____ |
| 10. _____ | _____ |

Number of people attending (except students): _____ x \$37.50 or \$45.00 = _____

Number of students attending: _____ x \$27.50 = _____

Sponsored Guest (2 x \$37.50 = \$75.00) = _____

TOTAL AMOUNT REMITTED _____

Make checks payable to "HCES" and mail with completed reservation form to:
 2007 Engineers Week Banquet
 c/o Walter Billingsley, P.E.
 HCES Treasurer
 Belt Collins Hawaii Ltd.
 2153 North King Street, Suite 200
 Honolulu, HI 96819-4554

If you have any questions, please contact HCES Chair Todd Barnes at toddbarnes@westonsolutions.com, telephone 275-2900. or HCES Vice Chair Maelyn Uyehara at MTUyehara@riderhunt.com, telephone 521-2641.



P.O. Box 88840
 Honolulu, HI 96830
 Website: www.acechawaii.org

2006-2007 OFFICERS

| | | Phone | FAX |
|------------|--|----------|----------|
| President | Barry Jim On | 521-3773 | 521-3993 |
| Pres-Elect | Jon Nishimura | 944-1821 | 946-9339 |
| Treasurer | Norman Kawachika | 531-1308 | 521-7348 |
| Secretary | John Katahira | 596-7790 | 596-7361 |
| PastPres | Janice Marsters | 484-5366 | 484-0007 |
| Natl. Dir. | Roy Yamashiro | 945-0198 | 944-1177 |
| Directors | Sheryl Nojima | 521-0306 | 531-8018 |
| | Douglas Lee | 523-8499 | 533-0226 |
| | Terrance Arashiro | 533-3646 | 526-1267 |
| Exec.Dir. | Ginny M. Wright | 741-4772 | 234-1721 |
| | E-mail: gwright@acechawaii.org | | |

Dates to Remember:

December 3 Engineering Excellence Awards – Kahala Mandarin Hotel

December 5 ACECH BOD Meeting

December 13 NAVFAC Symposium

THERE WILL BE NO MEMBERSHIP MEETING IN DECEMBER

New Business and Committee Reports:

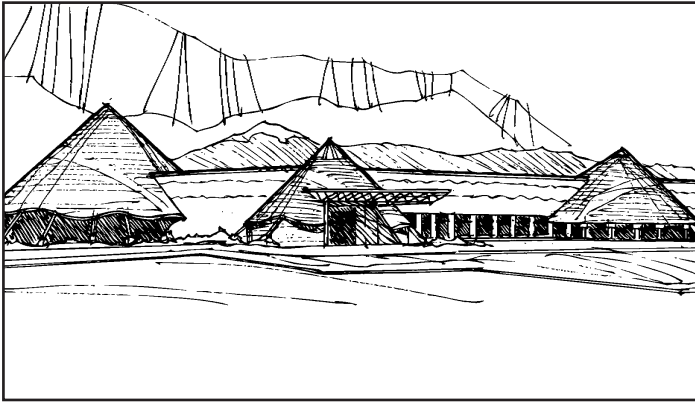
- Get your seats now for the Engineering Excellence Awards to be held on December 3rd at the Kahala Mandarin Hotel. The evening will be fun filled with a silent auction, and many interesting projects that will be competing for awards. Contact ACECH if you would like to attend the event, donate a gift or item to the silent auction, or participate in sponsorship of the event.
- 2006-2007 ACECH Membership Directories have been distributed to our member firms and various client agencies. If you have not received one, please contact Barry Jim On (521-3773) or Ginny Wright at ACECH.
- The next Monthly membership meeting will be held on January 4th, 2007 and will feature the new UH Engineering School Dean as our guest speaker.
- We still need study tours on Maui for the National ACECH Convention which will be held on Maui in September of 2007. If you have an innovative or interesting project on Maui that may be of interest please, and can serve as a tour for our visiting ACEC members from the mainland, contact ACECH (Ginny Wright).

Old Business

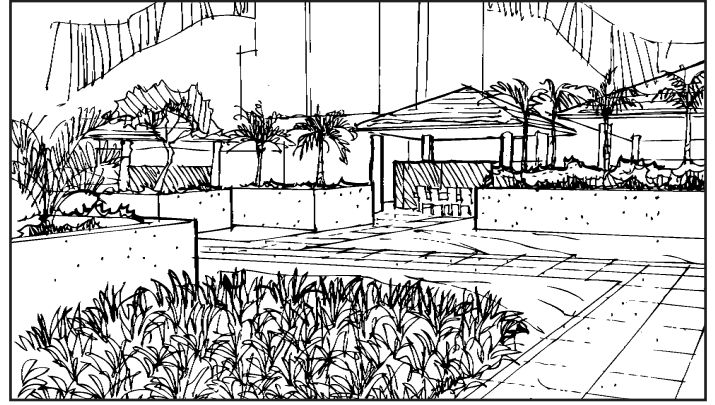
- November's monthly meeting focus was on Contractor Integrity and Ethics Training. Thank you to Jon Nishimura of Fukunaga and Associates, and Lambert Yamashita of Austin Tsutsumi as well as the rest of the Business Practices Committee for organizing a very informative and interesting workshop. Thank you also to our speakers Jessica Horiuchi and Terry Thomason. ACECH hopes to provide additional follow up training in the future in this same area.
- Please support your ACEC Political Action Committee (PAC). We are close to reaching our fundraising goal with 1-1/2 months to go!

Next Deadline for
Wiliki
is December 15th

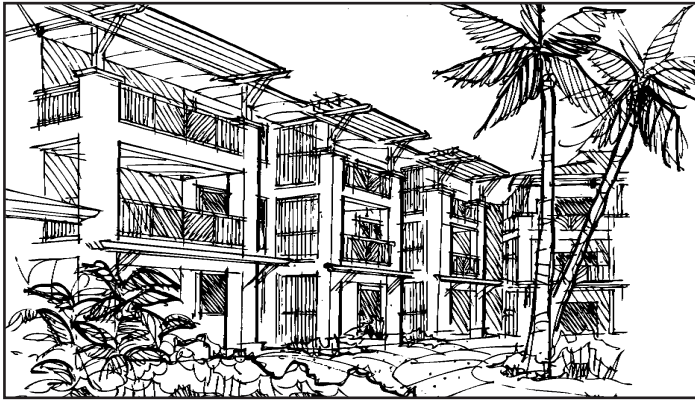
Imiloa Astronomy Center of Hawaii (Hawaii)



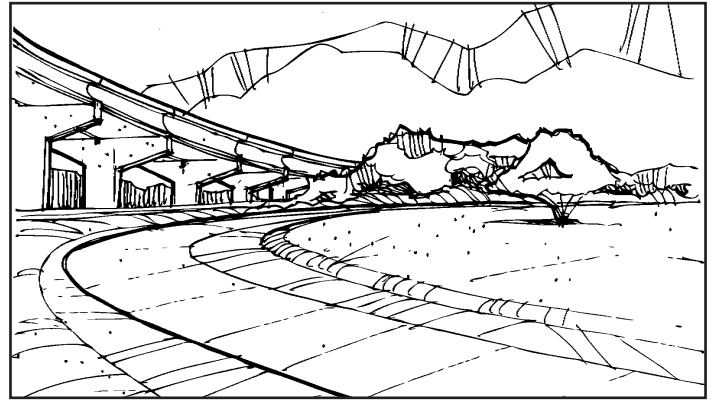
Hokua at 1288 Ala Moana (Oahu)



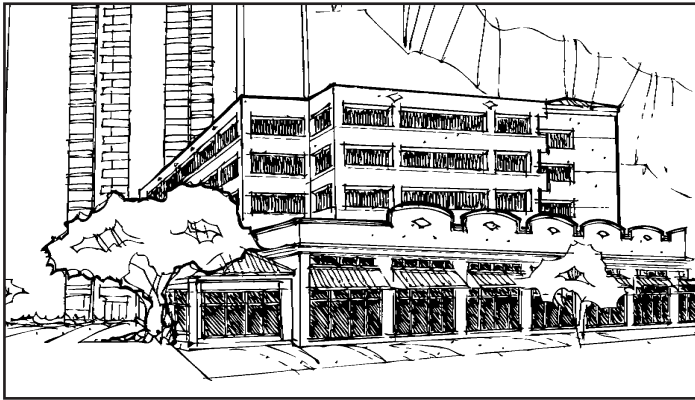
Ocean Villas at Turtle Bay (Oahu)



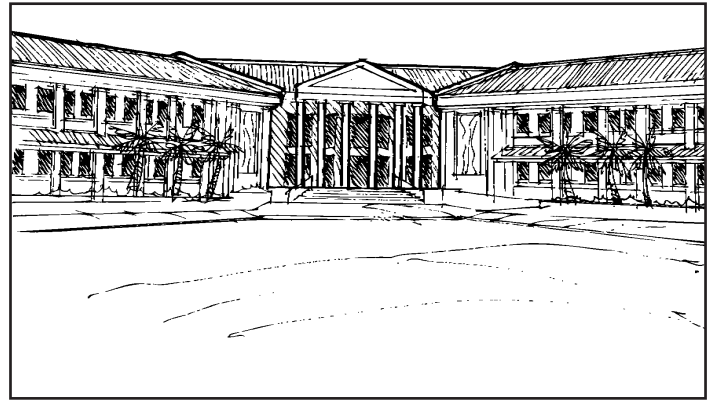
Moanalua Freeway Resurfacing, Halawa Interchange



215 North King Street Condominium (Oahu)



Kauai Judiciary Complex (Kauai)



Hikimoe Street Improvements for City Express Bus Service (Oahu)



Hawaii Theatre Center (Oahu)



KNOW YOUR ASCE HISTORY

by C.S. Papacostas

LET ENGINEERS INVESTIGATE

The original design of the dam at Reservoir No. 4 in Nuuanu Valley called for an earthen structure with a wooden core wall "carried down to proper depth." As I pointed out last month (Nov. 2006), shortly after construction commenced, signs of "troubles over specifications and other matters" were publicly disclosed.

In what follows, I summarize the tumultuous months that followed by piecing together the main picture that emerged from reports of the Hawaiian Star [HS], the Evening Bulletin [EB], and the Pacific Commercial Advertiser [PCA].

On June 1, 1906, project inspector W. R. Paterson, a brick mason by trade, issued the following order to contractor L. M. Whitehouse:

"Dear Sir: - I hereby notify you that I, as Government Inspector on Nuuanu reservoir, condemn the wooden pipe under reconstruction, and consider it beyond satisfactory repair."

The subject pipe was an effluent (or "waste") pipe that, along with an outlet (or supply) pipe, was designed to pierce the dam near its midpoint and to be operated by a valve tower within the reservoir.

Due to unknown site conditions, the specifications had left much to judgment of the engineer. In fact, future Honolulu Mayor John H. Wilson (whose partnership with Whitehouse's was dissolved in 1899) was said to have refused to bid for the job because of this "elastic condition of the specifications" [PCA, 6/15/1906].

Smoothing the rough edges of the situation, Whitehouse said:

"The engineer is determining these matters as the work progresses, is guided by the general plans and requirements for this work, based on the particular conditions as he finds them. In this, of course, there is always room for difference of opinion" [HS, 6/7/1906]. He illustrated his last point by saying that he recommended that the two wooden pipes be "surrounded by heavier concrete," but that the engineer was concerned about the additional costs involved. From subsequent descriptions, it appears that the contractor's argument prevailed.

C. H. Smith, who worked under the direct supervision of Assistant Superintendent of Public Works J. H. Howland, an engineer, performed the duties of the field engineer. Howland's brother-in-law, C. G. Walker, designed the dam.

Some of the "differences of opinion" were serious enough to precipitate a vicious controversy causing the involvement of a variety of professional groups and individuals as well as Governor George R. Carter who, by then, had recuperated from an illness and reclaimed the reigns of the Territory.

Besides rejecting the work on the effluent pipe, inspector Patterson brought up a series of concerns to Peter Cushing Jones, one of the leading citizens of Honolulu whose "fine residence" was located below the dam. Jones, in turn, encouraged Patterson to discuss these matters with the Governor, who within 48 hours paid a visit to the site and, after conferring with his Superintendent of Public Works C. S. Holloway, announced his decision to engage a competent outside engineer to investigate the project.

Immediately thereafter, the press picked up the story in earnest with headlines such as "Fears of Flood from the Big Dam" [HS, 6/5/1906], and "Patterson Declares Nuuanu Dam Unsafe" [EB, 1/6/1906], and a new series of claims and counterclaims were laid over the long-lasting debate about the project. This led the Governor to make

the statement I quoted in the May 2006 article:

"No public work can be undertaken without meeting severe opposition, both just and unjust" [EB, 6/22/1906]. In a subsequent retrospective report to the Legislature, he contrasted public and private works during that period:

"Private or individual enterprise is exempt from such an attack, because the public would consider it impertinent for those not informed to comment on the work, while in the case of public work it appears to be just the reverse" [EB, 3/1/1907].

Interestingly, he touched upon an often played tune that "professional men of high integrity will continue to find public work irksome, particularly if they are sensitive, until the public realizes that moral support of honest effort is even more essential than high pay."

From the technical perspective, there were major points of contention with respect to the adequacy of the design and specifications, materials and methods of construction.

With respect to the design, the major criticism was associated with the fact that the effluent and outlet pipes were made of wood and that they pierced the dam itself rather than circumventing it with side tunnels in solid rock. The counterpoint was that, if kept wet, wood lasts almost indefinitely as compared with iron that corrodes easily.

Those who preferred pervious or semi-pervious to "impervious" dams criticized the need for the core wall altogether, a streambed portion of which was replaced by a 4-foot thick concrete wall per Holloway's decision [HS, 6/18/1906]. Related to this wall was the claim that the trench dug to receive it revealed numerous spring flows and was not deep enough to reach a solid foundation. Finally, placing of the valve-tower on the embankment rather than farther upstream was

thought to weaken the structure.

The specifications were criticized for not clearly calling the appropriate materials thus allowing the contractor to make inferior selections, for example, northwest pine rather than redwood.

In the absence of instructions, the contractor used staves of different sizes to build the effluent pipe, a geometric arrangement that led to the need for butt joints, which Patterson characterized as "the weakest spot in the whole construction." In response, Howland instructed the contractor on June 8 "that all of the wood stave pipe be gone over on the inside and where open butt joints are found have them thoroughly caulked with oakum and lead" [PCA, 6/13/1906]. Four days later, he changed his mind and noted "upon further consideration I consider that wooden wedges driven into these butt joints, with white lead, would be far better than oakum, inasmuch as the oakum would undoubtedly deteriorate more rapidly than the wood" [PCA, 6/17/1906].

These and other issues led to almost universal agreement that an expert investigation was warranted. The editor of one newspaper, for example, declared "let engineers investigate" [PCA, 6/19/1906], whereas; the editor of another raised the question "who is the independent engineer whose opinion will be accepted as final, regardless of whether the conclusion is for or against the engineers of the Territorial Government [EB, 6/19/1906]?"

Do you know of a civil engineering accomplishment or event that your fellow ASCE members might find interesting? Please send a brief description to C.S. Papacostas (fax 956-5014, email csp@willki.eng.hawaii.edu). Previous articles in the series may be found at the Section's web site. Just point your browser to <http://www.ascehawaii.org>.



**The Society of American Military Engineers,
Honolulu Post
and the
Hawaii Council of Engineering Societies**



Invites you to join us for the

2007 ENGINEER'S WEEK KICK-OFF LUNCHEON

Presentation: Challenges of the Palau Compact Road

Speaker: Alex Morrison, P.E.

Hale Koa Hotel, Banyan Tree Showroom

Tuesday, February 20, 2007 at 11:30 AM

Luncheon Cost: \$25.00*

*\$12.50 for Students

RSVP BY: 12 FEBRUARY 2007

SEND THIS FORM AND PAYMENT TO:

Society of American Military Engineers, Honolulu Post
c/o Ginger Kelly
RIM Architects
851 Fort Street, Suite 200
Honolulu, HI 96813

(Make checks payable to Society of American Military Engineers)

Name: _____

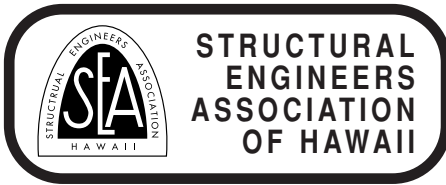
Organization*: _____

Address: _____

Phone: _____ Number in Party: _____ x \$25 = Total \$ _____

Receipt required: No _____ Yes _____ Email: _____

LUNCH: Warrior Buffet
*Students please indicate school and program



PO BOX 3348, HONOLULU, HI 96801
Web Page URL <http://www.seaoh.org>

2006 BOARD OF DIRECTORS (BOD) OFFICERS & DIRECTORS

| Position | Officer | Phone |
|------------|--|----------|
| President | Bennett Fung <i>bfung@ssfm.com</i> | 531-1308 |
| Vice Pres. | Gary Chock <i>structures@martinchock.com</i> | 521-4513 |
| Secretary | Brandi Jim On <i>bjimon@wilsonokamoto.com</i> | 946-2277 |
| Treasurer | Kevin Nakamoto <i>knakamoto@ssfm.com</i> | 531-1308 |
| Director | Ibbotson Kellett <i>ibbotson@hawaii.rr.com</i> | 540-1030 |
| Director | Paul Morimoto <i>morimoto@hawaii.rr.com</i> | 486-0787 |
| Director | Clifford Lau <i>clau1@honolulu.gov</i> | 527-6373 |
| Director | Akira Usami <i>ausami@dietchindustries.com</i> | 682-5747 |
| Past Pres. | Beverly Ishii-Nakayama <i>beverlyn@lava.net</i> | 942-9100 |

HIGHLIGHTS OF BOD MEETING

October 30, 2006

Committee Reports:

General Membership Meetings/Technical Seminars/Events:

- MIH Masonry Design Seminar is scheduled for November 16, 2006.
- 2007 SEAHO Installation Banquet will be held on Friday January 19, 2007 at The Plaza Club.
- AISC short program on progressive collapse and a preview of the new Seismic Design Manual is scheduled for January 30, 2007.
- AISC Seismic Design Seminar has been rescheduled to Mid 2007.
- 2006 Convention in Kyoto and Osaka, Japan. Approximately 80 people signed up for the Convention. Technical tours included Miho Museum, Kyoto Train Station, Akashi Kaikyo Bridge, Osaka High Rise Buildings, and Kobe City seismic engineering tour. Companion tours included the Kinkaku-ji and Kiyomizu temples, Fall foliage tour, Nara sightseeing tour, Osaka castle, and many shopping trips.

New Member Applications:

No new applications received.

New Business:

ATC-20 Post Earthquake Evaluation: The State Civil Defense has requested volunteer Structural Engineers to help perform ATC-20 safety evaluation of residences on the Big Island after the October 15 earthquake. Sixteen (16) volunteers in two different teams departed to Kona and Hilo during the week of October 23.

A dinner banquet is being planned to recognize the contribution of the volunteers. SEAHO plans to publish a report on our findings.

How to Retrofit your Home for the Next Hurricane Seminar: Received a letter from Governor Linda Lingle thanking SEAHO for our efforts to promote hurricane safety.

2007 SEAHO Convention: The 2007 SEAHO Convention will be held in Kona. The proposed date for the convention is the last weekend in August 2007. For those interested in attending, please contact any member of the SEAHO BOD if you have suggestions for another date or convention location.

Membership Directory: The SEAHO Membership Directory is being updated and a hardcopy as well as a PDF version will be distributed shortly.



Light Gauge Steel Engineers Association

HAWAII CHAPTER

98-029 Hekaha St. Unit 23, Aiea, Hawaii 96701
Phone: (808) 485-1400 Fax: (808) 485-1500
Web Page: www.lgsea.com

2006/2007 Officers and Directors:

| | Phone | Fax |
|---------------------------|----------|----------|
| President Tim Waite | 479-1216 | 941-9079 |
| Vice Pres Brian Enomoto | 486-5202 | 486-5206 |
| Secretary Adrian Lee | 536-7692 | 537-9022 |
| Treasurer Marvin Mestanza | 951-5916 | 941-6489 |
| Director Akira Usami | 682-5747 | 682-2928 |
| Director Will Wong | 682-6000 | 682-6001 |
| Director Shane Arnold | 499-3137 | 499-3142 |
| Past Pres Jeff Hanyu | 536-2108 | 521-3000 |

National LGSEA Secretariat

Don Allen 202-263-4488, x14, fax 202-785-3856
steeldon@earthlink.net

The newly-named CFSEI aims at enabling and aiding engineers in the efficient and proper structural design of safe and cost effective cold-formed steel (CFS) framed structures. For more information, visit our website www.lgsea.com.

CFSEI Participates in PACRIM 2007

CFSEI – Hawaii Chapter is actively participating in the 2007 Pacific Rim Steel Framing Conference (PACRIM 2007) to be held March 14-17, 2007 at the Hilton Waikiki Prince Kuhio in Honolulu, Hawaii. The conference will coincide with the 2007 Spring Forum of the national Steel Framing Alliance and annual national meeting of the Cold-Formed Steel Engineers Institute. Leading experts in cold-formed steel engineering and design, as well as cutting-edge researchers will be in attendance. A wide variety of seminar tracks to attract the building designers, contractors, and home-builders. Speakers from around the world will address topics on economics, home forecasts, architectural and engineering issues, and new construction tools and technologies. The chapter is organizing

four (4) technical seminars, namely, latest research updates on cold-formed steel (CFS), update on CFS design standards, diaphragm & shear walls in CFS, and mid-rise load bearing structures. Visit www.hawaiisteel.com for more details.

Mahalo to our sponsors

The chapter would like to thank its sponsors for their continued support for the structural engineers in Hawaii:

- 14 gauge sponsors: GW Killebrew, Dietrich Metal Framing and CEMCO Steel.
- 16 gauge sponsors: Simpson Strong-Tie and Hawaii Partition Systems.
- 18 gauge sponsors: Coastal Construction, Structural Analysis Group, Castle & Cooke Homes Hawaii, Maryl Pacific Construction, Aegis Metal Framing and Whitecap Construction Supply.
- 20 gauge sponsors: Grabber Pacific, Sinclair Drywall, and Sunrise Construction.

CFSEI Membership meeting

The CFSEI Hawaii together with the Hawaii Pacific Steel Framing Alliance held its membership meeting on November 2, 2006, Thursday at Sam Choy's BLC in Nimitz with Mr. Timothy F. Noonan of DL Adams Associates, Ltd as speaker. The presentation looked at the acoustical difference between different wall and floor/ceiling systems and how metal studs and joists compare to other studs and joists. Mr. Noonan also presented some new technologies like Quiet Solutions gypsum board and resilient clips and how they could affect acoustical performance with the two types of studs. Finally, common stud configurations that can inadvertently reduce the acoustical performance of a partition will also be covered.



STRUCTURAL SYSTEMS, INC.

General Engineering Since 1985

- New Construction
- Stop Settling
- Relevel Foundations
- Compaction Grouting
- Soil Nails/Shoring
- Micro & Pin Piles
- Rock/Soil Anchors
- Clay Stabilization
- Permanent Solutions



845-2474



The URETEK Method®
DEEP INJECTION COMPACTION GROUTING

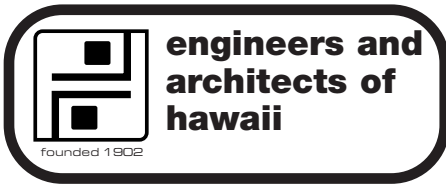


Atlas Piers



HELICAL ANCHORS & TIEBACKS
BEARING STRATA

Lic: AC-13555 ■ 1275 Mikole St.
www.ssihawaii.com ■ structurs001@hawaii.rr.com



po box 4353, honolulu, hawaii 96813
 An association for Hawaii's Engineers and Architects
 WEB Address <http://community.hei.com/eah>

2006- 2007 Officers

| | | |
|------------|----------------------|----------|
| President | Travis Hylton | 531-3017 |
| 1st VP | Ardalan Nikou | 523-8874 |
| 2nd VP | Michael Albright | 536-1737 |
| Secretary | Sam Gillie | 543-4739 |
| Treasurer | Ralph Dobson | 227-2746 |
| Directors: | Augie Ahlf | |
| | Eric Kashiwamura | 543-4705 |
| | Dr. C. S. Papacostas | |
| | Greg McCartney | |
| Past Pres. | Gary Yamamoto | |

December Meetings

EAH Meeting Schedule: See EAH Website for Details

- Dec 1 Program TBA**
- Dec 8 Program TBA**
- Dec 15 Program TBA**
- Dec 22 No Meeting Merry Christmas**
- Dec 29 No Meeting Happy New Year**

Meetings held every Friday (except Holidays) at YWCA room 205 on Richards Street downtown. Meetings start at NOON and end promptly at 1:00 pm. Parking at Alii Place off Alakea Street for \$1.50 per hour.

Buffet Lunch: Members-\$10.00, Guests-\$12.00, BYO lunches welcome. If not having the Buffet Lunch a donation is requested: Members \$2, Guests \$3; to help cover room rental costs.

Program schedule may be adjusted. Call Secretary Sam Gillie at 543-4739 (543-4804 FAX) to confirm speaker. Anyone wanting a weekly email meeting notice please send your email address to Sam Gillie at sgillie@hei.com.

Program Notes September 29th, 2006

Speaker: **Dr. Fereidun Fesharaki, CEO FACTS Global Energy Group**

Subject: "What is Hot in the Oil Industry" Dr. Fesharaki talked about the future of the Oil Industry in the next twenty years and over the next 100 years. **Dr. Fesharaki** estimated the price of oil will peak at about \$110 per barrel in current year's dollars in the next twenty years. It will hold at that level for a period of time and then he predicts the value of oil will start to drop. The actual price per barrel could be higher or lower, but he believes at that price level alternative energy options will become viable and will be developed. He related Greenpeace now supports the development of Nuclear Power. He talked about the world market for oil and how all oil based fuels are inter-related, so that the price of natural gas impacts the price of heating oil and oil price impact natural gas. He commented that Hawaii's attempt to use a Gas Cap was counter-productive. One of its impacts was the drop in capital investment improvements to Hawaii's two refineries. He also commented that new refineries are now being built in the US and around the world, ending a long slump in refinery construction. You can listen to Dr. Fesharaki's presentation at the EAH WEB page. Or Visit this WEB site http://www.eastwestcenter.org/about-dy-detail.asp?staff_ID=36

Program Notes October 13th, 2006

Speaker: **Rodney Chong** – Project Manager, Hawaiian Electric Company
 Subject: **"Underwater Ductlines to Ford Island"**

Rodney Chong provided a detail presentation on HECO and the Navy's project to install 46 kV electrical underwater ductlines to Ford Island. The project was part of the overall improvements for Ford Island, which includes a new utility Sub-Station. The route for the ductlines is in the utility corridor, which parallels the Admiral Clarey Bridge. Directional drilling was used to install the ductlines. An existing water supply pipeline had previously been installed within the utility corridor so it was important the directional drilling did not hit the water pipeline. Rodney explained that the first section or "nose" of the drill-line has a slight curve or bend. As the drill-line is pushed forward the nose is rotated to adjust the direction of the drilling. The drilling started in a Richardson Field and exited near the start of Ford Island Blvd. The ductline mostly passed through a firm coral material that wasn't too hard, but also did not collapse. After the pilot hole was completed the hole / boring was increased to about 24 inches. The ductline was steel cased to have the tensile strength for pulling the duct through the almost 1 mile boring. You can listen to Rodney Chong's presentation at the EAH WEB page.

Program Notes October 20th, 2006

Speaker: **Paul R. Weber** meta engineering
 Subject: **"Grout Injection Micropiles"** Casing Micropiles have been around a long time, Paul used his firsts casing micropiles in 1973. The new micropile is called Grout Injection Micropile. Grout is injected through a hollow rod and a hollow bit as the micropile is drilled into the ground. The grout comes out of the bit and comes up the

steel rod to the surface. They will continue to pump grout until the grout comes out the surface, so in coral sometimes they have had to pump 100 bags of grout to fill voids. When they stop drilling and stop pumping, a high strength steel rod encased in grout has been installed. The rod is about 1-3/8" in diameter. The grout is pumped at 300 psi through a 1/2" hole in the rod. The final pile is about 3 inches in diameter. They started using these in 2000. There are three specialty contractors installing these micropiles. They are used for buildings, piers, highways and houses. The drilling machine is a rotary percussion hammer similar to the drilling machines for hard rock mining. This new micropile system is less expensive and faster then the older casing micropiles. Paul and his son were the first to use this new micropile system in Hawaii. Paul provides the engineering while his son does the contracting and construction. You can listen to Paul Weber's presentation at the EAH WEB Past Meetings Page.

FALEA, from page 5

(Engineering), Mr. William Alicar (Engineering), and Mr. Gilbert Roces (Architecture).

The officers, directors and members of FALEA would like to thank all the sponsors, donors and guests for all their invaluable and continued support to the success of the induction and award night.



**Engineers Week 2007
 Call for Exhibits**

by the Hawaii Council of Engineering Societies

Your company/organization is encouraged to create a display that will increase public awareness and appreciation of the engineering profession. In the past, displays have included posters, 3-D models, and interactive systems.

- Exhibits will be displayed at Kahala Mall Shopping Center from Friday, February 16th, 2007 through Monday, February 26th, 2007.
- Entries will be judged on presentation, technical merit, and promotion of the engineering profession.
- Awards will be presented for each of the aforementioned categories at the Engineers Week Banquet on Saturday, February 24th, 2007.

Fax or email completed forms to Cathy Leong at (808) 946-2277 or cleong@wilsonokamoto.com by **January 15, 2007**.

Company Name/Organization/School _____

Contact Person _____

Phone _____ Fax _____

E-mail _____

Please attach a one to two paragraph summary describing your display (size and content). Also indicate any special needs that your display may require (i.e. table, electricity). You will be contacted to confirm the availability of the requested items.

Exhibit set-up is tentatively scheduled for Friday (2/16) with breakdown scheduled for Monday (2/26).



2005-2006 OFFICERS

President Greg Hiyakumoto
 Vice-president Paul Won
 Secretary Steven Yoshida
 Treasurer Robert Nehmad
 Director Wayne Yoshioka

November Meeting Highlights

The November luncheon meeting was held on November 8, 2006 at the City Annex. The guest speaker was James H. Pietsch, Professor of Law at the University of Hawaii at Manoa and Director of the University of Hawaii Elder Law Program (UHELP). Mr. Pietsch presented highlights from a document he had prepared entitled "Deciding "What If?": A Legal Handbook for Hawaii's Caregivers, Families, and Older Persons. The handbook was published in cooperation with the City & County of Honolulu Elderly Affairs Division, Hawaii County Office on Aging, Kauai County Agency on Elderly Affairs, and Maui County Office on Aging, with funding from the U.S. Administration on Aging. Some of the topics covered by the handbook include:

- Incapacity, guardianship, alternatives to guardianship and protective services
- Medical treatment and health care decisions
- Financing health care, including long-term care
- Hiring a caregiver, coping with death, finding a lawyer

Annual Meeting Announcement

The Annual Meeting date, location, and guest speaker will be announced at a later date. Meeting notices are forthcoming.

ASCE, from page 4

ASCE HAWAII SECTION'S WEBMAIL LIST – SIGN-UP AND/OR UPDATE

If you would like to receive e-mail notices of upcoming meetings or activities, please sign-up for the ASCE Hawaii Section's webmail list at <http://www.ascehawaii.org/emailform.html>. You may also update your email address on that same webpage. Please consider helping the ASCE Hawaii Section reduce operating costs by receiving your monthly issue of the Wiliki via e-mail. If you have any questions, please contact Webmaster Joanna Seto at 586-4329 or jseto@ascehawaii.org.

ASCE YMF, from page 5

ing engineering work written exclusively by a younger member or younger members; one winner selected and paper will be published in an ASCE official publication.

2. Daniel W. Mead Prize – Ethics paper; national winner presents paper at Annual Conference; Certificates of Commendation may also be awarded.
3. Edmund Friedman Young Engineer Award for Professional Achievement – Recognizes overall professional achievement; up to five awards may be given each year.
4. Young Government Civil Engineer Award – Recognizes overall achievement in the government sector; minimum of five years of government service required; Certificates of Commendation may also be awarded.

If you are interested in submitting a nomination, please contact YMF Awards Committee Chair Florence Ching at fching@ascehawaii.org or at 472-1342. Nominations are due to Florence no later than January 16, 2007. For more information on award criterion and award nomination forms visit the CYM website at <http://www.asce.org/inside/cym.cfm> or contact Florence.

SFPE, from page 3

Registration fee includes a workbook/ reference manual, coffee, and lunch.

Instructor: Michael Baker, SET AFAA Training Director

INTERMEDIATE FIRE ALARM SEMINAR

January 9 and 10, 2007

Content

- Review NICET Application Process
- Signaling Systems Fundamentals
- Protected Premises Systems
- Initiating Devices
- Notification Appliances
- Applicable Sections of the NEC
- Household Fire Warning
- Sprinkler, HVAC, & Elevator I/O
- ADAAG
- Inspection, Testing & Maintenance

COST - AFAA & SFPE members, their employees, and AHJ's- \$399 each
 3 or more \$359 each
 Non-members \$499 each
 3 or more \$449 each

Registration fee includes a workbook/reference manual, NFPA 72-2002, coffee, and lunch.

Instructor: Michael Baker, SET AFAA Training Director

To get a registration form go to www.affa.org or call the

Automatic Fire Alarm Association
 407-833-9133 Phone
 407-833-9131 Fax



ASME, from page 3

times the customer line up was long and the orders came fast requiring quick response. After working about 8 hours the crew realized why they went or are going to college, to avoid hard labor.

The Student Section members included Stuart Akagi, Eric Brown, Sara Fong, Kory Ikeda, and Brandon Mikami. The Senior Section members participating were Ed Chang, Chester Kaitoku, and Ray Liu. Chester Kaitoku arranged this fundraiser through his Electrical Engineer friend, Steve Murakami.

NOVEMBER 15 GENERAL MEMBERSHIP MEETING

The Executive Committee thanks Student Section members Eric Brown and Kory Ikeda, and special guests Eli Comeau, Daniel Jenkins, Carlton Say, and Janson Young for attending. The agenda included the following: Overview of the ASME International website showing the benefits of ASME membership, review of the ASME-HI website recounting the history of the Section and describing its primary annual activities, and commentary from the recent P.E. Refresher Course attendees on the value of the course. Chairman Ray Liu presented certificates of completion to P.E. Refresher Course students Daniel Jenkins and Janson Young.

ASME-HI section meeting are held bi-monthly at the Hawaiian Electric Company Ward Avenue cafeteria. Pizza and soft drinks are provided. All members are invited to attend.

ASME-HI CHRISTMAS PARTY ON DECEMBER 10

The Section's annual Christmas Party is being planned for Sunday, December 10. We are looking at having it at the same location as last year, the Golden Palace Restaurant on King Street near Maunakea Street. Please visit our website, www.sections.asme.org/hawaii for the details.

Professional Directory

| | | | |
|--|--|--|--|
| <p>SHIMABUKURO, ENDO & YOSHIZAKI, INC. <i>Civil, Environmental & Structural Engineers</i></p> <p>1126 12th Avenue, #309 Honolulu, Hawaii 96816-3715 Phone: (808) 737-1875 Fax: (808) 734-5516 Email: seyeng@lava.net</p> | <p>• CIVIL • STRUCTURAL • ENVIRONMENTAL • OCEAN</p> <p>Consulting Engineers Marc M. Siah & Associates, Inc. 810 Richards Street, Suite 888, Honolulu, HI 96813, Ph: 538-7180</p> | <p>INTERNATIONAL</p> <p>501 Sumner Street, Suite 620 Honolulu, Hawaii 96817 Ph (808) 531-1308 Fax (808) 521-7348 Project Managers, Planners, & Engineers www.ssfm.com</p> | <p>WES THOMAS ASSOCIATES Land Surveyors</p> <p>75-5749 Kalawa St., Kailua-Kona, Hawaii 96740-1817 Tel: 808 329-2353 Fax: 808-329-5334 <i>Surveying Hawaii Since 1975</i></p> |
| <p>720 IWILEI ROAD SUITE 425 P.O. Box 3351 HONOLULU, HI 96801 PHONE: (808) 536-2705 FAX: (808) 599-4032</p> | <p>R. M. TOWILL CORPORATION SINCE 1930</p> <p>PLANNING • ENGINEERING • ENVIRONMENTAL SERVICES PHOTOGRAMMETRY • SURVEYING • CONSTRUCTION MANAGEMENT 429 WAIKAPU ROAD • HONOLULU HAWAII 96817-4941 808 942 1133</p> | <p>Engineers Scientists Program and Construction Managers Environmental Planners</p> <p>815 Pinal Street, 17 Floor HONOLULU, HAWAII 96814-2161 Ph: (808) 593-1115 Fax: (808) 593-1138</p> | <p>Tim Waite, P.E. Sales, Engineer Mobile: 808-479-1216 Email: twait@strongtie.com</p> <p>SIMPSON Strong-Tie Co., Inc.</p> |
| <p>WALKER INDUSTRIES, LTD. Precast Concrete Products</p> <p>Frederick K. Wong, PE P.O. Box 1568 Kahului, Maui, Hawaii 96732 Maui (808) 877-3430 Fax (808) 871-7282</p> | <p>Weston Solutions, Inc. Suite 2301 841 Bishop Street Honolulu, Hawaii 96813 Phone: 808.585.0448 Fax : 808.585.7378 www.westonsolutions.com</p> <p>An employee-ownership Company</p> | <p>WILSON OKAMOTO CORPORATION</p> <p>Civil Engineers, Structural Engineers, Traffic Engineers, Planners</p> <p>4th Floor, 445, 1907 S. Beretania St., Suite 400 Honolulu, Hawaii 96813 www.wilsonokamoto.com</p> | <p>YKE YOUNG KIM ENGINEERS, LLC</p> <p>Geotechnical Engineering Traffic/Transit Technology Construction Management</p> <p>1111 Pitt Street, Suite 1000 Honolulu, HI 96813 Tel: (808) 786-3022 Fax: (808) 786-3022</p> |

Professional Directory

| | | | |
|--|--|---|---|
|  <p>ACE Land Surveying LLC 737 Bishop St., Suite 130 Honolulu, Hawaii 96817 Ph: (808) 523-2990, Fax: (808) 523-2992 Email: ace@landsurveyingllc.com</p> |  <p>Earth & Environmental, Inc. Tel: 808.545.2462 Fax: 808.528.5379 www.amec.com</p> <p><i>Full service environmental consulting, engineering, and compliance support. Formerly Ogden Environmental</i></p> |  <p>AUSTIN, TSUTSUMI & ASSOCIATES, INC. Civil Engineers • Surveyors 501 Sumner Street, Suite 521 Honolulu, HI 96817 Tel: 533-3646, Fax: 526-1267, Email: statstn@aatahawaii.com Branch Office: Wailuku, Maui CIVIL • TRAFFIC • SANITARY</p> |  <p>BeltCollins www.beltcollins.com</p> |
|  <p>BILLS ENGINEERING INC. Civil Environmental Engineering Tel: 808.792.2022 Fax: 808.792.2033 1124 Fort Street Mall Suite 200 Honolulu, HI 96813 info@BillsEngineering.com</p> | <p>BROWN AND CALDWELL Environmental Engineering And Consulting • Analytical Services 119 Merchant St., Suite 200 • Honolulu, HI 96813 (808) 523-8499 Fax (808) 533-0226 2145 Wells St., Suite 302 • Wailuku, HI 96793 (808) 244-7005 Fax (808) 244-9026</p> | <p>S.S. DANNAWAY ASSOCIATES, INC. Fire Protection Engineers Building Code Consultants 720 Iwilei Road, Suite 412, Honolulu, HI 96817 Tel: (808) 526-9019/Fax: (808) 537-5385 ssda@hawaii.rr.com</p> | <p>Akira Usami, P.E. Territory Sales Manager, Kapolei facility 91-300 Hanua Street Phone: (808) 682-5747 Fax: (808) 682-2928 www.dietrichmetalfaming.com (808) 537-5385 www.dietrichsteeljoist.com</p>  |
| <p>Y. Ebisu & Associates Acoustical and Electronic Engineers 1126 12th Avenue, Room 305 Honolulu, Hawaii 96816 (808) 735-1634</p> |  <p>EarthTech A Tyco International Ltd. Company 841 Bishop Street, Suite 500 Honolulu, HI 96813 Tel: 523-8874 • Fax: 523-8950</p> |  <p>Engineering Concepts, Inc. 1150 S. King St., Suite 700 Honolulu, HI 96814 Phone: 808-591-8820; Fax: 808-591-9010 Email: ec@echawaii.com</p> |  <p>ESH ENGINEERS-SURVEYORS HAWAII, INC. (FORMERLY WILLIAM HEE & ASSOCIATES, INC.) 900 HALEKALUWILA STREET HONOLULU, HAWAII 96814 Phone: 591-8116</p> |
|  <p>Esaki Surveying and Mapping, Inc. Lihue, Kauai, Hawaii Ph. (808) 246-0625 • Fax (808) 246-0229 esmap@hawaiian.net ENGINEERS • SURVEYORS Established 1979</p> |  <p>Fewell Geotechnical Engineering, Ltd. OAHU: 96-1416 Waihona Place • Pearl City, Hawaii 96782-1973 (808) 455-6569 • FAX (808) 456-7052 MAUI: (808) 873-0110 FAX (808) 873-0906</p> | <p>MASA FUJIOKA & ASSOC. A PROFESSIONAL PARTNERSHIP ENVIRONMENTAL • GEOTECHNICAL • HYDROGEOLOGICAL CONSULTANTS 98-021 Kamehameha Highway, Suite 337 Aiea, Hawaii 96701-4914 Phone 808 484-5366 • Fax 808 484-0007</p>  | <p>FUKUNAGA & ASSOCIATES, INC. 1388 Kapiolani Blvd. Honolulu, HI 96814 Phone: 944-1821 Email: office@fainc.org Website: www.fainc.org</p>  |
|  <p>GEOLABS, INC. Geotechnical Engineering and Drilling Services 2006 Kalihii Street Honolulu, Hawaii 96819 Phone: 841-5064 Fax: 847-1749</p> |  <p>GRAY-HONG-NOJIMA & ASSOCIATES, INC. 841 Bishop Street, Suite 1100 Honolulu, Hawaii 96813 Tel: (808) 521-0206 Fax: (808) 521-8018</p> |  <p>Hawaii Pacific Engineers, Inc. 1132 Bishop Street • Suite 1003 Honolulu, Hawaii 96813-2830 Phone: (808) 524-3771 • Fax: (808) 538-0445 E-mail: hpeinc@hawaiipacificengineers.com</p> | <p>is the state of hawaii www.ehawaii.gov/statejobs</p> |
| <p>total POWER SOLUTION HAWTHORNE CAT 94-025 Farrington Hwy. Waipahu, Hawaii 96797 808/676-0205 Hawthorne Power Systems</p> | <p>HIDA, OKAMOTO & ASSOCIATES, INC. CONSULTING CIVIL ENGINEERS HDA PACIFIC GUARDIAN TOWER 1440 Kapiolani Boulevard, Suite 1120 Honolulu, Hawaii 96814 Phone: (808) 942-0066 Fax: (808) 947-7546</p> | <p>ERNEST K. HIRATA & ASSOCIATES, INC. Soils and Foundation Engineering 99-1433 Koaha Place • Aiea, Hawaii 96701 Fax (808) 486-0870 • Phone (808) 486-0787</p>  | <p>SAM O. HIROTA, INC. Engineers & Surveyors 864 S. Beretania Street Honolulu, Hawaii 96813 Telephone: 537-9971</p>  |
| <p>INABA ENGINEERING, INC. 275 WAIANUENUE AVENUE HILO, HAWAII 96720 Phone: (808) 961-3727 / Fax: (808) 935-8033 Civil Engineering • Structural Engineering Land Surveying</p> | <p>KFC AIRPORT, INC. PROJECT MANAGEMENT CONSULTANTS PLANNING • ARCHITECTURAL/ENGINEERING DESIGN • CONSTRUCTION MANAGEMENT 3375 Koopaka Street, Suite F220-48 Honolulu, HI 96819 Phone: (808) 836-7787 Fax: (808) 834-4833</p>  | <p>KN CONSULTING SERVICES, INC. Civil Engineers 1451 South King Street, Suite 412 Honolulu, Hawaii 96814 Phone: (808) 941-8882 Fax: (808) 941-8828 Email: knconsb@pixi.com</p> | <p>THE LIMTIACO CONSULTING GROUP CIVIL ENGINEERING AND ENVIRONMENTAL CONSULTANTS 802 Iwilei Road, Suite 208 • Honolulu, Hawaii 96817 Tel: (808) 599-7792 • Fax: (808) 599-7261 • www.lcg-hawaii.com</p> |
| <p>LYON ASSOCIATES CIVIL ENGINEERING/CONSTRUCTION MANAGEMENT 841 Bishop Street, Suite 2006 Honolulu, Hawaii 96813 Tel: (808) 536-6521 Fax (808) 523-1738 E-mail: adminhi@lyonassociates.com</p> | <p>M&E Pacific, Inc. Surveying Civil Engineering & Design Environmental Engineering Water Treatment & Supply Construction Management Wastewater Collection & Treatment 841 Bishop Street, Suite 1900 Honolulu, Hawaii 96813</p>  | <p>YOUR AD COULD APPEAR HERE FOR \$235 A YEAR</p> | <p>NAGAMINE OKAWA ENGINEERS INC. CONSULTING STRUCTURAL ENGINEERS 1001 Bishop Street • Pauahi Tower, Suite 725 Honolulu, Hawaii 96813 Phone: (808) 536-2626 • FAX: (808) 536-3926</p> |
| <p>NAKAMURA, OYAMA AND ASSOCIATES, INC. CONSULTING ENGINEERS ELECTRICAL/TELECOMMUNICATIONS/FIRE PROTECTION 1314 South King St., Suite 401 Honolulu, Hawaii 96814-1939 Telephone (808) 591-8887 Fax (808) 596-2383</p> | <p>NEWCOMER - LEE LAND SURVEYORS, INC. 1498 Lower Main Street, Suite "D" Wailuku, HI 96793-1937 Tel: (808) 244-8889 Fax: (808) 244-8422</p>  | <p>oceanit www.oceanit.com</p>  | <p>Okahara & Associates, Inc. Engineering Consultants 200 Kohala St., Hilo, HI 96720 Ph. (808) 961-5527 Fax (808) 961-5529 677 Ala Moana Blvd., Suite 703, Honolulu, HI 96813 Ph. (808) 524-1224 Fax (808) 521-3151 73-5574 Malua St., Bay 6B, Kailua-Kona, HI 96740 Ph. (808) 329-1221 Fax (808) 329-1006</p> |
| <p>PGE Pacific Geotechnical Engineers, Inc. Soils & Foundation Engineering Consultants 429-B Waiakamilo Road Honolulu, Hawaii 96817 (808) 841-8024 FAX (808) 848-5102 E-mail: pge@pacificgeotechnical.com</p>  | <p>ParEn, Inc. SUITE 1500, PACIFIC PARK PLAZA 711 KAPIOLANI BOULEVARD HONOLULU, HAWAII 96813 TELEPHONE: (808) 593-1676 FAX: (808) 593-1607 EMAIL: paren@pareninc.com dba park engineering Engineers, Surveyors, Planners</p>  | <p>Sato & Associates, Inc. HONOLULU 2046 South King Street Honolulu, HI 96826 Tel: (808) 955-4441 Fax: (808) 942-2027 MAUI 2115 Wells Street Wailuku, HI 96793 Tel: (808) 244-9265 Fax: (808) 244-5303 CONSULTING ENGINEERS • CIVIL & STRUCTURAL</p>  | <p>Shaw • Environmental & Infrastructure • Design & Engineering Services • Construction & Maintenance • Homeland Security 590 Paiea Street, Suite B, Honolulu, HI 96819-1835 Tel: (808) 840-2000 • FAX: (808) 839-0339</p>  |

HAWAII COUNCIL OF
ENGINEERING SOCIETIES
P.O. Box 2873
Honolulu, Hawaii 96802

Presorted
Standard
U.S. Postage Paid
Honolulu, Hawaii
Permit No. 1400