

SPRING 2021 FRANCIS RHODES MONTGOMERY DESIGN COMPETITION RESULTS

The Spring 2021 ASME Hawaii Francis Rhodes Montgomery Design Competition (FRMDC) was held on Friday, May 7, 2021, via Zoom video conference. This is the 34th year of the competition since it began in 1987 and the 2nd year that the competition was held virtually due to the ongoing global pandemic. The annual event is cosponsored by the University of Hawaii at Manoa, Department of Mechanical Engineering, and the ASME Hawaii Francis R. Montgomery Foundation.

Thanks to the efforts of Professors Dr. Mehrdad Nejhad and Dr. Trevor Sorensen, the student project coordination and competition were completed with great success. Dr. Nejhad and Dr. Sorensen have been the instructors for the Senior Design ME 481/482 courses for Fall 2020 and Spring 2021.

This year, the design competition consisted of 8 project teams from the ME 482 design course. The virtual format consisted of the teams performing a timed presentation in which the students presented their project goals, challenges, application of engineering principles, and design results, followed by judge's questions. The teams then held timed poster presentations where after a short and final speech to present the successes and accomplishments of their project, the judges were able to ask their final and more detailed questions about each project. Unfortunately, the students were still not able to perform live demonstrations of their projects due to the challenges that social distancing posed for fabrication and testing. This was especially difficult for the larger projects that typically require large amounts of on-campus fabrication time. This portion of the competition was not taken into consideration for scoring due to these reasons.

Despite the challenges of the pandemic, the students adapted very well and all did a fantastic job planning, designing, problem solving and converting their design concepts into reality. Following the ASME/FRMDC scoring rubric and guidelines, the judges ranked the first, second, and third place teams as follows: First place and \$500 went to Team UHPS: Autonomous Electric Vehicle System; in second place and receiving \$300 was Aerospace Technologies Team Hokulele; and third place and \$200 was awarded to Team UHABS-7. All 8 of the mechanical engineering student teams demonstrated the application of their cumulative engineering knowledge very well making final scores extremely competitive. The projects were so competitive that there was a 3-way tie for 4th place.

Team Project Descriptions:

SENIOR DESIGN TEAM



DARYLL
SUYAT



MACKENZIE
HULIHEE



MHAIRI
NURTHEN



MATHIEU
HIGA



JACE
NAGAO



ROXANNE
BALANAY

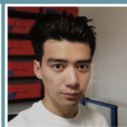


KYLE
YAMADA

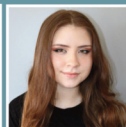
VIP MEMBERS



ALEX
MENESES



KYLE
MCDOWELL



ZION
EASTERBROOK



First Place Team: Team UHPS: Autonomous Electric Vehicle System (AEVS)

The Team UHPS goal was to design the next iteration of the AEVS that will accept and deliver parcels around the University of Hawaii, Manoa upper campus with the purpose of testing and encouraging the use of electric power. Design improvements made to the AEVS were a self-correcting differential steering powertrain, usage of camera object detection along with ultrasonic & bumper sensors, improvements to the interior cargo hold and parcel security, and the addition of GPS-mapping.

Second Place Team: Team Hokulele: Two-Stage High Powered Rocket

Team Hokulele's goal was to design and build a two-stage high powered rocket capable of carrying a rover and camera payload. The rocket is designed to reach an altitude of 30,000 feet and be recovered safely. This project supports the University's developing aerospace program by promoting interest in the aerospace industry both within the school and the community. Team Hokulele will be traveling to the Friends of amateur Rocketry (FAR) 1030 rocket competition in June 2021.

Third Place Team: University of Hawaii Advanced Balloon Satellite 7

The University of Hawaii Advanced Balloon Satellite 7 team is focused on developing a marine vessel that will autonomously return a balloon satellite payload designed for an ocean landing. This recovery vehicle will aid future balloon satellite launches to prevent the loss of instrumentation and data. The recovery system is designed to perform autonomous navigation and guidance in ocean conditions, that can be controlled and monitored by a ground control

station via telemetry. The vehicle will propel and steer itself through the ocean and successfully return to a designated recover location off the coast of Oahu.

Fixed Wing Autonomous Drone

The Fixed-Wing Autonomous Drone VIP (FWAD) team has designed and developed a fully autonomous electric and Unmanned Aerial Vehicle (UAV) to survey and monitor a 4,000-acre macadamia nut farm on the Big Island of Hawaii. The UAV will take footage with an HD camera under the fuselage providing ground crew with an HD bird's-eye view of the area below, so that the operator can determine if the crops are ready to harvest, or have been fully harvested.

Pearl Harbor (PH)-Pipe Array Cleaning Robot

The PH-Pipe team completed two projects: the autonomous pipe array cleaning robot and the pipe inspection attachment. The team laid out the base for the control architecture of the autonomous pipe array cleaning robot using the Arduino coding language to ease future modifications of the existing source code. The team also successfully created an attachment to an existing borescope model used in the Pearl Harbor Naval Shipyard to aid in turning and navigating 90° bends of small diameter pipes.

Pearl Harbor (PH)-Metal 3D Printing Certification

PH-M3D developed a certification process for metal 3D printed parts to certify that the components can be safely used in the same



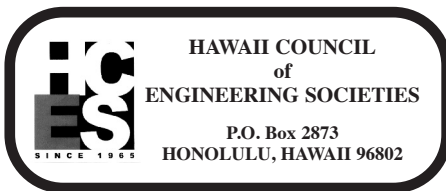
Published monthly by:

HAWAII COUNCIL OF ENGINEERING SOCIETIES

SERVICE PRINTERS, INC.
 1829 Dillingham Boulevard • Honolulu, HI 96819
 Telephone: (808) 841-7644 • Fax: (808) 847-1487
 ADDRESS ARTICLES FOR PUBLICATION TO:
 WARREN YAMAMOTO
 1526-C Pukele Avenue • Honolulu, HI 96816
 Telephone: 732-5216

WILIKI MAILING LIST

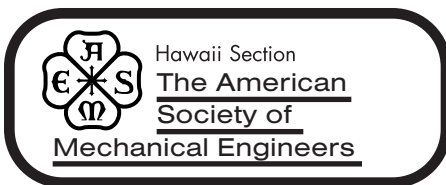
Additions and/or corrections to the Wiliki mailing list should indicate the proper society, institution or association. Corrections to email addresses should be submitted to your society coordinator.



HOME PAGE: hceshawaii.org
 EMAIL: hcesorg@gmail.com

2021-2022 OFFICERS

Chair:	Roger Babcock	
Vice-Chair:	Jay Stone	
Secretary:	Open	
Treasurer:	Kristen Yoshida	
SOC	Representative	Alternate
AACE	J. Uno	
ACECH	M. Adolpho	
APWA	R. Char	
ASCE	E. Arakawa	
ASHRAE	D. Kishi	Samantha Nakamura
ASME	F. Garma	
EAH	S. Gillie	
FALEA	M. Stevenson	
HSPE	M. Kamaka	K. Kunimine
HWEA	R. Babcock	
IEEE	G. Torigoe	
ITE	W. Yamamoto	
SAME	L. Wong	
SEAOH	K. Hashimoto	
SFPE	S. Dannaway	
SWE	K. Yoshida	
UHM CoE	S.K. Choi	



www.asme-hi.com

ASME-HI 2021-2022 Officers

Chairperson	Derek Sato derek.sato@hawaiianelectric.com
Vice-Chair	vacant
Secretary	Raymond Liu
Treasurer	Kevin Dang dangk001@hawaii.rr.com

College's Mini-Symposium on June 16 will commemorate 50 years of ALOHAnet



ALOHAAnet, the pioneering computer networking system developed at the University of Hawai'i at Mānoa's College of Engineering is turning 50 this year, and the College is celebrating this anniversary with a 50th Anniversary Mini-Symposium to be broadcast live from Mānoa on June 16.

The virtual event is free and open to the public, and runs from 8:00 am to 1:00 pm HST, with an agenda packed full of guest speakers, video presentations, and panel discussed highlighting the history of the technology, its impact on academia, and its impact on industry.

Speakers include Hawai'i Governor David Ige, Google Chief Internet Evangelist Vint Cerf, IEEE President Kathy Land, FCC CTO Monisha Ghosh, and many more. The event is supported by The Bass Trust (Presenting Sponsor), and

the IEEE Communications Society (Logo Sponsor).

ALOHAAnet was developed under the leadership of the late founder Dr. Norman Abramson, who passed away in December of 2020, as well as Dr. Franklin Kuo and a team of faculty and students. All wireless communications today – including mobile, satellite, cellular, and WiFi – utilize the ALOHA protocol to establish an initial link. In October of 2020, ALOHAAnet was inducted as the third IEEE Milestone in the state of Hawai'i.

The public may register to attend the symposium at <https://www.eng.hawaii.edu/event/alohonet50/>.

Learn more about ALOHAAnet at <https://www.eng.hawaii.edu/about/history/alohonet/>.

NEXT ASME-HAWAII GENERAL MEMBERSHIP MEETING

Date: Friday, May 28, 2021

As usual, all members, students and guests are invited and encouraged to attend our Zoon Conference Call meetings. Please contact Derek Sato for the link.

GENERAL MEMBERSHIP MEETING

Our second Zoom Conference Call meeting was held April 30, 2021 starting 4:00 PM (HST). Meeting was conducted by Chairperson Derek Sato with the following discussed (some events took place after the meeting):

ASME GLDC 2021:

The ASME Group Leadership Development Conference (GLDC) was planned for and held virtually on April 30 and May 1, 2021. Registration fee was just \$20 per attendee. Both days ran from 4:00 AM (HST) to about 8:30 AM (HST). The conference provided the opportunity to network with peers and gather virtually to learn about working within our groups and developing successful programs in a virtual environment, the nuts and bolts of running thriving volunteer teams, and ASME and their role in helping us achieve our volunteer leadership goals.

The GLDC was attended by Chair Derek Sato, and Member Abel Siu Ho. They will share lessons learned and information gathered from their GLDC participation.

2021 FRANCIS RHODES MONTGOMERY DESIGN COMPETITION (FRMDC):

The 2021 34th FRMDC was planned for and held May 7, 2021 from 11:00 AM to 5:00 PM via private Zoom meeting. Judges from Hawaiian Electric Company, Inc. were provided with project brochures and scoring guidelines as they judged the projects. Please see the FRMDC report in this Wiliki.

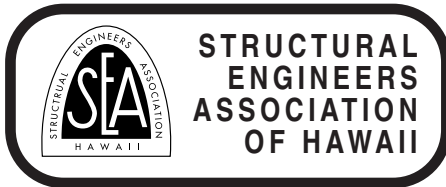
GIVEAWAY FOR ASME-HI VOLUNTEERS AND PARTICIPANTS:

We are looking into products such as padfolios, polo shirts, and drink flasks with ASME logo to give to members and guests attending ASME-HI activities to encourage participation and of course for publicity.

POSSIBLE FUTURE TOURS:

Discussed were the University of Hawaii Linear Accelerator and Metal X 3D printer. Details will be provided as the tours are arranged.

**Deadline for
 Wiliki
 is June 15th**



PO BOX 3348, HONOLULU, HI 96801
Web Page URL <http://www.seah.org>

2021 BOARD OF DIRECTORS OFFICERS AND DIRECTORS

President John Uno
john@mkellc.com
Vice President Craig Meierhoffer
cmeierhoffer@baseengr.com
Secretary Clifford Lau
clau1@honolulu.gov
Treasurer James Aoki
james.m.aoki@usace.army.mil
Director (Yr 2) Rod Haraga
rharaga.mih@gmail.com
Director (Yr 2) Lauren Tolentino
ltolentino@bomat.net
Director (Yr 1) Justin Matoi
jmatoi@wje.com
Director (Yr 1) Will Wong
wwong@gprmp.com

Upcoming Events

For all events see seah.org or email flyers.

- Joint SEAHO-ASCE meeting on Tuesday, June 29 with HART presenting on rail transit design.

SEAHO Annual Golf Tournament

- Annual golf tournament is scheduled for October 22nd.

Membership Applications

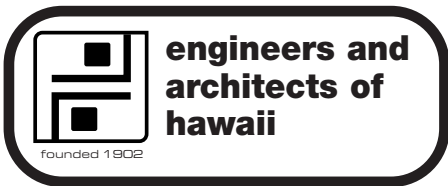
Applications from Kate Hannas for MEMBER and Patricia Paulino for Associate Member were approved.

Application was received from:

- Juan Gonzalez, Associate Member

Please contact any SEAHO Board Member by July 1, 2021 to file comments regarding the applicant.

Next Meeting on Wednesday, June 2, 2021. For information, contact SEAHO President John Uno at john@mkellc.com



PO. Box 1901, Honolulu, HI 96805-1901
An association for Hawaii's Engineers and Architects

WEB address: www.eahawaii.org

EAH 2020 Officers

President	Phil Blackman	282-7948
1st V. P.	Rob Kinslow	
Treasurer	Aaron Erickson	591-2728
Secretary	Sam Gillie	

EAH is currently only having Zoom Meetings until further notice.

Regular meetings are held 2 times per month on Fridays. Meetings start at NOON and have ended PROMPTLY at 1:00 pm for over 110 years.

Members, guests, and the Public are welcome to join EAH meetings. Email eahawaii@gmail.com to get the Zoom meeting links.



Hawaii Section 2020-2021 OFFICERS

www.aacehawaii.com

President	Christopher Kanae
Vice Pres.	Will Sparks, PSP
Secretary	Yashaira Fletcher
Treasurer	Jeanette Roberts
Dir. Soc. Med.	Yong Shi, CCP
Cont. on the Board of Directors	Maelyn Uyehara (Past Pres.)

On April 30, 2021 an expert panel comprising the most dynamic players of Rider Levett Bucknall delivered the Q1 Hawaii Market Outlook and Road Ahead virtual presentation to our local AAACE chapter.

Using their independent cost research in the local market and recently published data in RLB's Q1 2021 Quarterly Construction Cost Update for North America, the leadership team shared their insight on the state of Hawaii's construction market and how current supply and demand constraints may influence the cost and timing of projects across the islands.

The presentation offered a comprehensive look at economic indicators and activity cycles in U.S. & Hawaii, Industry impacts & labor trends across the Hawaiian Islands, RLB's construction cost analysis, and risk mitigation strategies for consultants in a post-pandemic era. The presentation file can be accessed through AAACE Hawaii Section Website <http://aacehawaii.com/>.

As a member of the Board of the Council of Engineering and Scientific Specialty Boards (CESB), AAACE International offers a range of certification levels from technician to professional to expertise level including CCT, CCP, CEP, EVP and PSP Certification Programs.

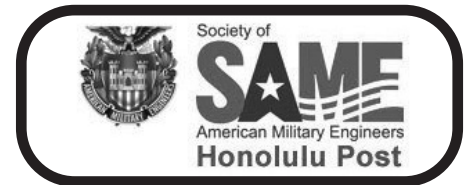
The local section, AAACE Hawaii, was originally established in 1973. It achieved both the Platinum and Gold Award for seven consecutive years 2014-2020. Our local area continues to achieve CCP, CEP, CST and PSP certifications. For more information, please visit <http://web.aacei.org/certification> and our local website www.aacehawaii.com.



<http://www.hawaiispe.org/>

HSPE Officers for 2020-2021

Acting Pres:	Sara Doi sdoi@bowersandkubota.com Irina Constantinescu IConstantinescu@BrwnCald.com
Pres. Elect:	vacant
Vice Pres:	Sara Doi sdoi@bowersandkubota.com
Past Pres:	Majella Stevenson MujTravel@aol.com
Secretary:	Kurt Kunimune kkunimune@bowersandkubota.com
Treasurer:	Mike Silva mike@femaui.com
HOD '19-'21:	NICET Chair '19-'20: Curtis Beck curtbegood@mail.com



P.O. Box 31218, Honolulu, HI 96817
Web page: www.samehonolulu.org

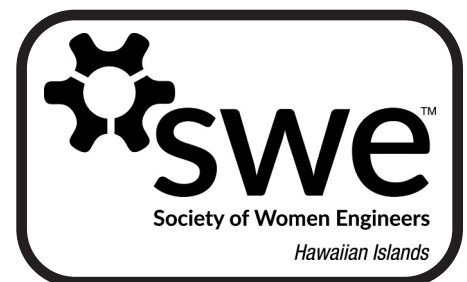
SAME Honolulu Officers and Directors

President	COL James Hoyman, USINDOPACOM Leighton Wong, PE
VP/Programs	
VP/Sustaining Members	Will Boudra, USN (Ret)
VP/Membership	Wesley Ishizu
Secretary	Jeff Clark
Treasurer/Investments	Andre Lee
Regional VP, Pacific Region	Eric Warner, USAF (Ret)
Advisor at Lge, Air Force	John Lohr, Col, USAF (Ret)
Advisor at Lge, Army	LTC Josh Sturgill, USA
Advisor at Lge, Coast Guard	LCDR Kyle Ensley, USCG
Advisor at Lge, Navy	LCDR Jason Ray, USN
Director, Awards/Streamers	Todd Barnes, PE, USA (Ret)
Director, Communications	Julie Chen

2021 SAME Honolulu Scholarship Program

The 2021 SAME Honolulu Post Scholarship Program is now accepting applications. **Application deadline is July 16, 2021.** Applicants must be accepted into a College of Engineering or School of Architecture at a 4-year university with an accredited Engineering or Architecture program. 4-year scholarships worth \$6,000 are available to current high school seniors entering their freshman year of college and 1-year scholarships worth \$1,500 are available to continuing college students.

For more information on the 2021 scholarship program categories, eligibility, and scholarship application submittal requirements, download the 2021 SAME Honolulu Scholarship Application at www.samehonolulu.org. For any questions or inquiries, contact Jennifer Kamo at Scholarship@samehonolulu.org.



HOME PAGE: <http://hi.swe.org>
EMAIL: swe.hisection@gmail.com
Facebook: www.facebook.com/swe.hawaiianislands

2019-2020 SWE Hawaiian Islands (SWE-HI) Section Officers

President: Dian Nguyen, dungnguyen@gmail.com
Vice President: Andrea Mansfeld, amansfeld@oceanit.com
Treasurer: Kristen Yoshida, kristenhaau@gmail.com
Secretary: Chi Jow, cjow.swehi@gmail.com

The mission of the Society of Women Engineers is to empower women to achieve full potential in careers as engineers and leaders, expand the image of the engineering and technology as a positive force in improving the quality of life, and demonstrate the value of diversity and inclusion.



2020-2021 ASCE Hawaii Section Officers

President: Dayna Nemoto-Shima, P.E.
 email: dnemoto@ascehawaii.org
 Pres.-Elect: Clifford Lum, P.E.
 email: clum@ascehawaii.org
 Vice Pres.: Reyn Hashiro, P.E.
 email: rhashiro@ascehawaii.org
 Treasurer: Eric Tomishima, P.E.
 email: etomishima@ascehawaii.org
 Secretary: Sheila Uyeoka, P.E.
 email: suyeoka@ascehawaii.org
 Past Pres.: Jason Kage, P.E.
 email: jkage@ascehawaii.org
 YMF Pres.: Carly Kaneko, P.E.
 email: ckaneko@ascehawaiiyfm.org

EXECUTIVE COMMITTEE MEETING

Last held: May 12, 2021
 Next meeting: June 9, 2021

ASCE HAWAII SECTION DINNER MEETINGS

The continued health and safety of our membership is our top priority and we will continue to monitor the COVID-19 pandemic. Future in-person ASCE Hawaii Section events, including our section dinner meetings, are still temporarily on hold. Zoom meetings will be scheduled in lieu of in-person meetings, date and time TBD. We will keep you informed via e-blasts and/or notices posted on our website at ascehawaii.org when they will be scheduled. Please continue to stay safe, watch out for each other, especially our kupuna, and continue to be vigilant about best health practices.

JUNE MEETING – Joint meeting with SEI/SEAOH

Date: Tuesday, June 29
 Location: via Zoom
 Time: 12:00pm – 1:00pm
 Cost: None (RSVP via Eventbrite)

ASCE's COVID-19 RESOURCES PAGE

<https://collaborate.asce.org/covid-19/home>

Reminder that ASCE has launched a COVID-19 resources page with online tools and tips in one convenient place. The page includes links to free programs, training, and resources, the results of COVID-19 industry impact surveys, and relevant online discussions with fellow members. The page also offers several ways to work more effectively while at home and activities to take advantage of in the down time you may have – even fun things to do with the keiki! And don't forget that all members have 10 free PDHs! Now may be a good time to catch up on some of those technical on-demand webinars.

COMMITTEE POSITIONS

ASCE Hawaii is looking for volunteers for various committee positions. If you are interested or have questions on any of these positions, please contact President Dayna Nemoto-Shima, dnemoto@ascehawaii.org.

MEMBERSHIP

If you haven't already done so, please renew your ASCE membership, which includes 10 free PDHs. You can renew your membership at www.asce.org.

ASCE HAWAII SECTION STUDENT SCHOLARSHIPS

Please help us increase our scholarship endowment so that we can recognize deserving

students. We continue to accept tax-deductible donations with the goal of increasing the annual scholarships. Make your check payable to 'ASCE Hawaii Section' and include the note 'Walter Lum Scholarship Fund' and mail to: ASCE Hawaii Section, P.O. Box 917, Honolulu, HI 96808-0917. If you have any questions, please contact Eric Tomishima at etomishima@ascehawaii.org.

ASCE JOB LISTINGS

The following job listings are currently posted on the ASCE Hawaii Section website:

- **AECOM** (Civil Engineers II)
- **City and County of Honolulu** (Civil Engineer III, IV, V, Civil Engineer V (Geotechnical), & Electrical Engineer V)
- **Gray Hong Nojima & Associates, Inc.** (Junior Civil Engineer)
- **G70** (Civil Designer, Civil Engineer, Civil Project Manager, Construction Manager)

- **HDR** (Senior Civil Engineer, Project Manager, Senior Engineering Project Manager, Water/Wastewater Engineer)
- **Hawaii Housing Finance and Development Corporation** (Section Chief)
- **Kennedy/Jenks Consultants** (Project Manager, Honolulu Staff Engineer, Hawaii Staff Engineer)
- **Nagamine Okawa Engineers Inc.** (Structural Engineer)
- **R.M Towill Corporation** (Assistant Engineer I, Assistant Engineer II, Civil Design Engineer, Design Visualizer 3D Modeler)
- **Stantec** (Account Manager/Engineer-Water)
- **SSFM** (Civil Engineer V, Structural Engineer IV)

For further information, please visit <http://www.ascehawaii.org/job-listings.html>.



2020-2021 YMF Officers

Carly Kaneko, President
ckaneko@ascehawaiiyfm.org
 Claire Fukuoka, Vice President
cfukuoka@ascehawaiiyfm.org
 Brandon Uejo, Treasurer
buejo@ascehawaiiyfm.org
 Lance Lam, Secretary
llam@ascehawaiiyfm.org
 Kapiolani Street, Past President
kstreet@ascehawaiiyfm.org

YMF General Meeting

The next virtual YMF general meeting will be on Wednesday, July 7, 2021 at 6pm via either Zoom or Gather.town. Please send your RSVP to yfm.hawaii@gmail.com, details will be distributed to those who RSVP prior to the meeting. Please be sure to check out our website and social media channels for the most updated information and for details on virtual events. If you are interested in attending and learning more about the various professional, social and service opportunities available through YMF, please contact YMF at yfm.hawaii@gmail.com.

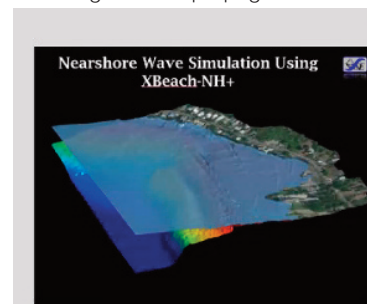
Wave Modeling Presentation

On Friday, April 16th, Morgan Stephenson, Ocean Engineer, Sea Engineering, Inc., presented "Wave Modeling - Effects of Sea Level Rise and Inundation." Twenty-five ASCE YMF members attended the virtual presentation on Zoom which included a live question and answer session. Stephenson explained how Sea Engineering uses buoy data and the "XBeach-NH+" modeling software to visualize sea level rise, and high-resolution wave modeling of wave propagation and inundation

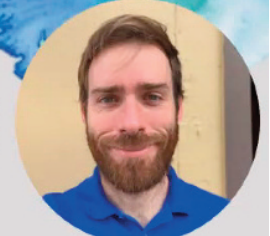
patterns. Sea Engineering has used wave modeling for Kahalu'u Beach Park, Hawaii island, and currently is using it for the Waikiki Beach master plan.

Macrame Social

On May 7th, 17 ASCE YMF members joined together over Zoom for a macrame plant pot holder making event. In preparation for Mother's Day, the participants learned the ropes (literally), creating hanging pot holders for mini succulents. The members conversed and partook in good fellowship, reminding us the importance of social interaction. All of the macrame pieces turned out beautifully. Thank you to all the participants for attending!



Ian Hardy



Morgan Stephenson

MONTGOMERY DESIGN COMPETITION RESULTS, from Page 1

operating conditions as commercial parts while significantly reducing part acquisition time. The process shall also use CAD modeling and metal 3D printing to resolve the previously infeasible challenge of creating an accurate cable mold with complex geometries.

Kanaloa – Wireless Sensor Nodes for Autonomous Maritime Robotics

Team Kanaloa has developed a set of unique Wireless Sensor Nodes (WSNs) for the Renewable Energy, Industrial Automation, and Precision Engineering (RIP) Lab's Wave Adaptive Modular Vehicle (WAM-V). The WSN system reduces the complexity involved in setup and eliminates the need to recalibrate sensors on the WAM-V through the implementation of repeatable mounting and wireless sensor communication.

Rainbow Warrior Racing – Formula SAE Electric Vehicle Race Car

Rainbow Warrior Racing (RWR) at UH Manoa has been a part of the Formula Society of Automotive Engineers (SAE) collegiate design series for many years and for much of that time the vehicle was built around an internal combustion engine. RWR has shifted to the electric vehicle class and this is the current focus of the 2020-2021 team and will continue to remain the focus for future teams in years to come.

Acknowledgements:

ASME Hawaii would like to thank Professors Dr. Mehrdad Nejhad and Dr. Trevor Sorensen along with the UHM DME for leading and conducting the 2021 Francis Rhodes Montgomery Design Competition, and for helping to perpetuate this mechanical engineering annual event. Thanks to all the Senior Design Course participants who worked hard and professionally in presenting their mechanical engineering projects. Finally, thanks to the judges Doug Dye, Richard Leclerc, and Nick Paslay who persevered through the long hours of presentations, providing the professional Q&A, and professionally scoring the presentations. All judges are volunteers from the Hawaiian Electric Company where Francis R. Montgomery retired as Vice President of Engineering in 1979.



2020-2021 Officers:

President: Kelly Akasaki
Kelly.akasaki@honolulu.gov
 Vice Pres.: Jasmine Teramae-Kaehuuea
jkaehuuea@atahawaii.com
 Sec/Treas: Keoni Wasano
keoni@goldwings-supply.com

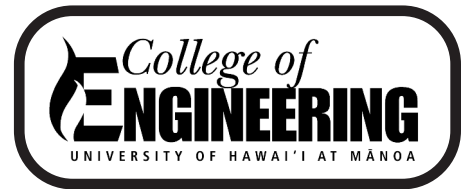
The ITE Hawaii Section hosted a virtual Technical Solutions Event on Wednesday, May 19th. The event featured transportation industry partners including Carmanah, Econolite, Iteris, McCain, PedSafety, and Q-Free. Each company hosted a breakout session focused on projects outside of Hawaii but highlighted how the solution could be applied locally. The goal of the event was to provide attendees with innovative solutions for transportation issues and share lessons learned. The section hopes to establish this as a yearly event and plans to bring new partners and new solutions in each year.

If you would like to be added to the ITE mailing list, please email Keoni Wasano at keoni@goldwings-supply.com.



2020-2021 Officers

President: Jason Nikaido
jnikaido@honolulu.gov
 Vice Pres.: Shelle Silva
Shelle.silva@honolulu.gov
 Treasurer: Jon Baker
jbaker@honolulu.gov
 Secretary: Alicia Nakano
alicianakano@kennedyjenks.com
 Past Pres.: Scott McAdam
smcadam@honolulu.gov
 PWO Rep.: Herman Ellis III
Hellis1@honolulu.gov
 Nat. Delegate: Kyle Yukumoto
kyley@rmtowill.com



2540 Dole Street, Holmes Hall
 Honolulu, Hawaii 96822

UHM College of Engineering Deans and Chairs

Dean: Brennon Morioka
 Int. Assoc. Dean: David T. Ma
 Assistant Dean: Song K. Choi
 CEE Chair: Ian Robertson
 EE Chair: Wayne Shiroma
 ME Co-Chairs: Lloyd Hihara and Weilin Qu
 HAWTI Dir.: Magdy Iskander

Spring 2021 Career Day a hit with employers and students

On February 26th, the College of Engineering successfully hosted its second Engineering Career Day in a fully virtual format. Over 80 companies participated in the morning and afternoon sessions, with nearly 300 student and 200 recruiter attendees per session.

Employers ranged from city, state, and federal agencies to large mainland corporations and boutique local engineering firms. Opportunities were available for civil, computer, construction, electrical, and mechanical engineering students, as well as computer science majors and those from related backgrounds. Participating companies promoted both full-time and internship placements, and alumni of the college were also invited to attend.

The online career fair coincided with Engineers Week, offering a mid-week focal point for Hawai'i's celebration of the nationwide week highlighting the engineering profession.

Via the virtual platform, candidates and recruiters were able to engage in 1:1 chats via text, audio, and video connections, and over the course of the event, over 1,700 conversations were held. Students worked hard to prepare for Career Day by attending a variety of preparation events organized by the College, including resume review sessions, feedback sessions with industry professionals, and a LinkedIn workshop.

Stay tuned for details on the College's Fall 2021 Career Day, to take place in late September 2021.

Professional Directory

<p>SHIMABUKURO, ENDO & YOSHIZAKI, INC. Civil, Environmental & Structural Engineers  1126 12th Avenue, #309 Honolulu, Hawaii 96816-3715 Phone: (808) 737-1875 Fax: (808) 734-5516 Email: seyeng@seyeng.com</p>	<p>Tim Waite, P.E. Sr. Territory Manager Mobile: 808-479-1216 Email: twaite@strongtie.com Simpson Strong-Tie Co., Inc. </p>	<p>SSFM INTERNATIONAL  www.ssfm.com</p>	<p>WPT WALTER P. THOMPSON, INC. SURVEYING & MAPPING  720 IWILEI ROAD SUITE 425 P.O. Box 3351 HONOLULU, HI 96801 PHONE: (808) 536-2705 FAX: (808) 599-4032</p>
<p>R. M. TOWILL CORPORATION SINCE 1930 Civil Engineering Wastewater Engineering Surveying & Mapping Planning Construction Management Project Management Contact: 808.842.1133 rmtowill@rmtowill.com www.rmtowill.com</p>	<p>KAI HAWAII STRUCTURAL & FORENSIC ENGINEERS  50 S. Beretania Street, #C-119C • Honolulu, HI 96813</p>	<p>JUNO & ASSOCIATES CONSTRUCTION COST CONSULTANTS 1210 Ward Avenue, Suite 204 Honolulu, Hawaii 96814 Phone: (808) 947-6855 info@juno-associates.com</p>	<p>WALKER INDUSTRIES, LTD. Precast Concrete Products  Frederick K. Wong, PE P.O. Box 1568 Kahului, Maui, Hawaii 96732 Maui (808) 877-3430 Fax (808) 871-7282</p>
<p>WILSON OKAMOTO CORPORATION SINCE 1930 INNOVATORS • PLANNERS • ENGINEERS www.wilsonokamoto.com</p>	<p>WJE 808.591.2728 www.wje.com Engineers Architects Materials Scientists Serving Hawaii and the Pacific Since 1979</p>	<p>WSP Question the ordinary Imagine the extraordinary Create the enduring  honolulu.wsp.com wsp.com/jusa 808-536-1737</p>	<p>YKE YOGI KWONG ENGINEERS, LLC 677 Ala Moana Blvd., Suite 710 Honolulu, HI 96813 Tel: (808) 942-0001 www.yogikwong.com Geotechnical Engineering Trenchless Engineering Construction Management</p>

HAWAII COUNCIL OF
ENGINEERING SOCIETIES
P.O. Box 2873
Honolulu, Hawaii 96802

RETURN SERVICE REQUESTED

Professional Directory

<p>AECOM 1001 Bishop Street, Suite 1600 Honolulu, HI 96813 tel: 808.521.3051 www.aecom.com</p>	<p><i>HonoSiMu</i> CAD/CAE Service For: Manufacturing Product Testing Failure Analysis Researching HonoSiMu, LLC honosimu.com info@honosimu.com</p>	<p>Austin Tsutsumi & Associates, Inc. Civil Traffic Environmental Surveying Branch Offices in Wailuku, Maui and Hilo, Hawaii www.atahawaii.com</p>	<p>BELT COLLINS ENGINEERING • PLANNING • LANDSCAPE ARCHITECTURE ENVIRONMENTAL CONSULTING bchdesign.com</p>
<p>BILLS ENGINEERING INC. Civil Environmental Engineering Tel: 808.792.2022 Fax: 808.792.2033 1124 Fort Street Mall Suite 200 Honolulu, HI 96813 info@BillsEngineering.com</p>	<p>BOWERS + KUBOTA CONSULTING • Project Management • Planning • • Architectural/Engineering Design • Construction Management • 94-408 Akoki Street, Suite 201-A • Waipahu, Hawaii 96797 Phone: 808.836.7787 • Telefax: 808.834.4833</p>	<p>Brown AND Caldwell Environmental Engineers & Consultants Maui - Honolulu brownandcaldwell.com</p>	<p>COFFMAN ENGINEERS www.coffman.com</p>
<p>ControlPoint Surveying, Inc. Oahu: 615 Piikoi Street, Suite 700 Honolulu, Hawaii 96814 Ph: (808) 591-2022, Fax: (808) 591-8333 Email: surveying@cpshawaii.net Maui: 1129 Lower Main Street, Suite 102 Wailuku, Hawaii 96793 Ph: (808) 242-9641 Email: cpsmaui@cpshawaii.net</p>	<p>When it's RUST Call us (808) 676-1963 www.corrosioncops.com</p>	<p>Y. Ebisu & Associates Acoustical and Electronic Engineers 1126 12th Avenue, Room 305 Honolulu, Hawaii 96816 (808) 735-1634</p>	<p>CUMMING Building Value Through Expertise Cost + Project Management 808-947-4525 ccorpusa.com</p>
<p>Engineering Concepts, Inc. Civil/Environmental/Sanitary Engineers 1150 South King Street, Suite 700 • Honolulu, Hawaii 96814 Phone: (808) 591-8820 • Fax (808) 591-9010 Email: cec@ecihawaii.com</p>	<p>ESH ENGINEERS-SURVEYORS HAWAII, INC. (FORMERLY WILLIAM HEE & ASSOCIATES, INC.) 1320 N SCHOOL ST., STE 1 HONOLULU, HAWAII 96817 Phone: 591-8116</p>	<p>MASA FUJIOKA & ASSOC. A PROFESSIONAL PARTNERSHIP ENVIRONMENTAL • GEOTECHNICAL • HYDROGEOLOGICAL CONSULTANTS MFA 98-021 Kamehameha Highway, Suite 337 Aiea, Hawaii 96701-4913 Phone 808 484-5366 • Fax 808 484-0007 masa-fujioka-associates.com • email@masafujioka.com</p>	<p>FUKUNAGA & ASSOCIATES, INC. CONSULTING ENGINEERS WWW.FUKUNAGAENGINEERS.COM CELEBRATING OUR 50TH ANNIVERSARY</p>
<p>GEOLABS, INC. Geotechnical Engineering and Drilling Services 2006 Kalihii Street Honolulu, Hawaii 96819 Phone: 841-5064 Fax: 847-1749</p>	<p>Gray-Hong-Nojima & Associates, Inc. CONSULTING ENGINEERS 201 Merchant Street, Suite 1900 Honolulu, Hawaii 96813 Telephone: (808) 521-0306 Fax: (808) 531-8018 email@grayhongnojima.com www.grayhongnojima.com</p>	<p>HARTCROWSER Geotechnical, Environmental, and Natural Resources Consulting janice.marsters@hartcrowser.com www.hartcrowser.com</p>	<p>total POWER SOLUTION HAWTHORNE POWER SYSTEMS CAT 94-025 Farrington Hwy, Waipahu, Hawaii 96797 808/676-0205</p>
<p>HCD ROCK SOLID SINCE 1908 www.hcdhawaii.com • sales@hcdhawaii.com</p>	<p>HDR Honolulu 808.697.6200 Maui 808.359.2518 hdrinc.com</p>	<p>HIDA, OKAMOTO & ASSOCIATES, INC. CONSULTING CIVIL ENGINEERS PACIFIC GUARDIAN TOWER 1440 Kapiolani Boulevard, Suite 1120 Honolulu, Hawaii 96814 Phone: (808) 942-0066 Fax: (808) 947-7546</p>	<p>Hirata & Associates, Inc. Geotechnical Engineering 808.486.0787 www.hirata-hawaii.com</p>
<p>SAM O. HIROTA, INC. Engineers & Surveyors 864 S. Beretania Street Honolulu, Hawaii 96813 Telephone: 537-9971</p>	<p>ISLAND GEOTECHNICAL ENGINEERING, INC. Geotechnical Consultants 330 Ohukai Road, Suite 119 Kihai, Hawaii 96753 Phone: (808) 875-7355 Fax: (808) 875-7122 Email: ige@ighawaii.com</p>	<p>Kennedy/Jenks Consultants Engineers & Scientists The BLOCK Honolulu 707 Richards Street Suite 528 Honolulu Hawaii 96813 P: 808.218.6030 F: 808.488.3776 Direct: 808.218.6042</p>	<p>THE LIMTIACO CONSULTING GROUP CIVIL ENGINEERING AND ENVIRONMENTAL CONSULTANTS 1622 Kananui Street • Honolulu, Hawaii 96817 (808) 596-7790 • tighawaii.com</p>
<p>MCE INTERNATIONAL, INC. MECHANICAL CONSULTING ENGINEERS 1360 S. Beretania Street, Suite 400, Honolulu, HI 96814 Phone: (808) 941-0955 Fax: (808) 550-8167 E-mail: mcehnl@mceinternational.com Website: www.mceinternational.com</p>	<p>Creative People, Practical Solutions.® moffatt & nichol Marine & Transportation Planners and Engineers 808.533.7000 www.moffatfnichol.com</p>	<p>NAGAMINE OKAWA ENGINEERS INC. CONSULTING STRUCTURAL ENGINEERS 1003 Bishop Street • Suite 2025 Honolulu, Hawaii 96813 Phone: (808) 536-2626 • FAX: (808) 536-3926</p>	<p>Okahara and Associates, Inc. ENGINEERING CONSULTANTS Civil - Mechanical Engineers Hilo: (808) 961-5527 • hilo@okahara.com Oahu: (808) 524-1224 • oahu@okahara.com www.okahara.com Small Business and Certified HUBZone</p>
<p>oceanit www.oceanit.com</p>	<p>PGE Pacific Geotechnical Engineers, Inc. Soils & Foundation Engineering Consultants 94-417 Akoki Street Waipahu, Hawaii 96797 (808) 678-8024 FAX (808) 678-8722 E-mail: pge@pacificgeotechnical.com</p>	<p>PE ParEn, Inc. SUIE 1500, PACIFIC PARK PLAZA 711 KAPOLANI BOULEVARD HONOLULU, HAWAII 96813 TELEPHONE: (808) 593-1676 FAX: (808) 593-1607 EMAIL: paren@pareninc.com dba park engineering Engineers, Surveyors, Planners</p>	<p>Sato & Associates, Inc. Consulting Engineers Honolulu • Maui www.satoandassociates.com</p>